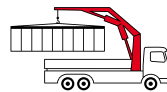


# The World of Cranes

**PALFINGER CRANE**

**PALFINGER CRANE**



**KTL**  
protected

**Paltronic 50**  
controlled

**RRC**  
Remote Remote Control  
operated

**ISC**  
Infrared Sensor Control  
monitored

**AOS**  
Automatic Obstacle  
inside

**PALFINGER**

[www.palfinger.com](http://www.palfinger.com)

KP-POCKETSAMPLER08, 05/08

## Willkommen in der Welt der PALFINGER-Krane

Dieser handliche Pocket-Guide soll Ihnen einen ersten Überblick über unser umfangreiches Kranprogramm geben und anhand technischer Daten eine Vorauswahl ermöglichen. Wie auch immer Ihr spezielles Anforderungsprofil aussieht – als Weltmarkt- und Technologieführer bei LKW-Knickarmkranen bietet PALFINGER sicher auch für Sie die ideale Lösung. Gerne sind wir oder einer unserer 3200 Verkaufs- und Servicestützpunkte weltweit dabei behilflich, diese auch zu finden!

## Welcome to the World of PALFINGER-Cranes

This pocket guide serves as a compact overview of our extensive crane range and should thus enable you make a pre-selection based on the technical information provided. No matter how specific your demands, we at PALFINGER, the global market leader of knuckle boom cranes, have for sure the ideal solution for you. Of course, we or one of our 3200 distribution and service points world wide would be more than welcome to help you find the best solution for you!

## Bienvenido al mundo de las grúas PALFINGER

Esta guía de bolsillo manejable pretende ofrecerle una sinopsis de nuestra amplia gama de grúas permitiéndole hacer una selección previa sirviéndose de los datos técnicos. Independientemente del perfil de exigencias especial suyo, PALFINGER como líder del mercado mundial y de tecnología en grúas articuladas para camiones tiene con toda seguridad también la solución ideal para usted. ¡Nosotros o uno de nuestros 3200 centros de ventas y de servicio en todo el mundo estamos gustosamente a su disposición para encontrar también dicha solución!

## Benvenuti nel mondo delle gru PALFINGER

Obiettivo di questa comoda guida tascabile è di darle un panoramica di massima della nostra ampia gamma di gru e di darle la possibilità di una prescelta in base ai dati tecnici. Qualunque siano le Sue particolari esigenze, quale leader tecnologico e del mercato mondiale per autogru con braccio a snodo, PALFINGER ha senz'altro anche per lei la soluzione ideale. Per trovarla siamo a sua completa disposizione con i nostri 3200 punti di vendita e di assistenza!

## Bienvenue dans l'univers des grues PALFINGER

Ce guide de poche pratique vous fournira un aperçu de notre large éventail de grues et vous permettra de faire une première sélection, caractéristiques techniques à l'appui. En tant que leader mondial et technologique dans le secteur des grues à bras articulé montées sur camion, PALFINGER possède certainement la solution qu'il vous faut, quelles que soient les exigences propres à votre cas particulier. Nos collaborateurs ou l'un de nos 3200 points de vente et de service répartis dans le monde entier vous assisteront volontiers dans le choix du produit qui convient!

## Welkom in de wereld van de PALFINGER-kranen

Deze handige pocket-guide dient ertoe u een eerste overzicht van ons omvangrijke kraanprogramma te geven en u in staat te stellen om aan de hand van de technische gegevens een voorselectie te maken. Ongeacht de speciale wensen die u heeft – als wereldmarkt- en technologieleider op gebied van autolaadkranken heeft PALFINGER met zekerheid ook voor u de ideale oplossing. Wij of onze 3200 verkoop- en servicesteunpunten in de hele wereld zijn u met plezier van dienst bij het vinden hiervan!





## Velkommen til PALFINGER-kranenes verden

Denne lommeetgaven gir deg en oversikt over vårt omfangsrike kranprogram, og de tekniske spesifikasjonene skal kunne gjøre et forhåndsutvalg lettere. Uansett hvordan dine spesielle krav og behov ser ut – som teknologisk leder på verdensmarkedet innen vipparmskraner for lastebiler har PALFINGER sikker den ideelle løsningen for deg. Vi eller et av våre 3200 salgs- og serviceverksteder er mer enn gjerne behjelpelige med å finne denne løsningen.

# PC 900

Compact



									
(mt)	(m)	(°)	(mt)	(MPa)	(l/min)	(kg)	(mm)	(mm)	(mm)

<b>Std</b>	-	1.6	360	-	-	-	72	1205	400	400
------------	---	-----	-----	---	---	---	----	------	-----	-----

### Std








The outreaches stated are with a boom angle of  $8^\circ$  and are therefore not the maximum.



# PC 1300

Compact



									
(mt)	(m)	(°)	(mt)	(MPa)	(l/min)	(kg)	(mm)	(mm)	(mm)

<b>A</b>	1.2	2.7	340	0.3	19.0	6	165	1205	770	400
----------	-----	-----	-----	-----	------	---	-----	------	-----	-----

### CE Std



m	<u>1.9</u>	<u>2.7</u>	
kg max.	990	600	400

### CE A - V1



m	<u>1.9</u>	<u>2.7</u>	<u>3.5</u>	<u>3.0</u>
kg max.	990	600	400	300

### Std



m	<u>1.9</u>	<u>2.7</u>	
kg max.	1140	600	400

### A - V1

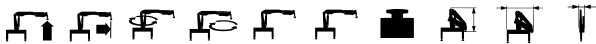


m	<u>1.9</u>	<u>2.7</u>	<u>3.5</u>	<u>3.0</u>
kg max.	1140	600	400	300

The outraches stated are with a boom angle of 8° and are therefore not the maximum.


# PC 2300

Compact




	(mt)	(m)	(°)	(mt)	(MPa)	(l/min)	(kg)	(mm)	(mm)	(mm)
<b>A</b>	2.3	3.0	340	0.33	18.5	6	230	1518	895	400
<b>B</b>	2.2	4.0	340	0.33	18.5	6	260	1518	895	400

**CE A - V1, V2**




m		<u>3.0</u>	<u>4.0</u>	<u>5.0</u>
kg	max. 990	715	500	380

**CE B - V1**




m		<u>3.0</u>	<u>4.0</u>	<u>5.0</u>
kg	max. 990	680	480	380

**A - V1, V2**



m	<u>1.2</u>	<u>2.2</u>	<u>3.0</u>	<u>4.0</u>	<u>5.0</u>
kg	max. 1820	1040	715	500	380

**B - V1**

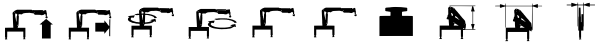


m	<u>1.3</u>	<u>2.2</u>	<u>3.0</u>	<u>4.0</u>	<u>5.0</u>
kg	max. 1700	990	680	480	380

The outreaches stated are with a boom angle of 8° and are therefore not the maximum.

# PC 3300

Compact



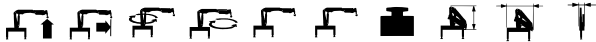
	(mt)	(m)	(°)	(mt)	(MPa)	(l/min)	(kg)	(mm)	(mm)	(mm)
<b>A</b>	3.2	3.8	340	0.33	18.0	8	315	1653	1084	440
<b>B</b>	3.1	4.8	340	0.33	18.0	8	345	1653	1084	440





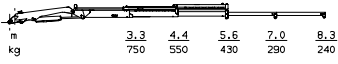
# PK 2200

*Compact*

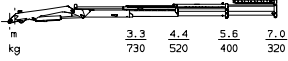


	(mt)	(m)	(°)	(mt)	(MPa)	(l/min)	(kg)	(mm)	(mm)	(mm)
<b>A</b>	2.1	5.6	368	0.33	20.0	10	545	1608	1860	522
<b>B</b>	2.1	7.0	368	0.33	20.0	10	565	1608	1876	522

**A - V1, V2**



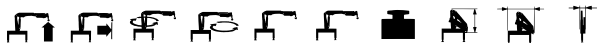
**B**



The outreaches stated are with a boom angle of 8° and are therefore not the maximum.

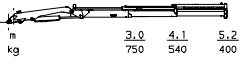
# PK 2700

Compact

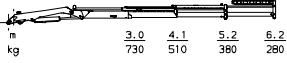


	(mt)	(m)	(°)	(mt)	(MPa)	(l/min)	(kg)	(mm)	(mm)	(mm)
<b>A</b>	2.5	5.2	360	0.25	19.0	8	370	1480	1710	481
<b>B</b>	2.4	6.2	360	0.25	19.0	8	390	1480	1710	481

**A**



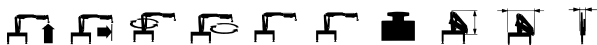
**B**



The outreaches stated are with a boom angle of 8° and are therefore not the maximum.

# PK 3200

Compact



	(mt)	(m)	(°)	(mt)	(MPa)	(l/min)	(kg)	(mm)	(mm)	(mm)
<b>A</b>	3.2	5.6	368	0.40	20.0	10	550	1610	1860	522
<b>B</b>	3.1	7.0	368	0.40	20.0	10	590	1610	1876	522
<b>C</b>	2.9	8.3	368	0.40	20.0	10	625	1610	1892	522

### A - V1, V2

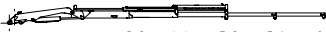


Diagram of crane boom A showing a horizontal boom with a counterweight at the base and a hook at the end. The boom is divided into five sections of different lengths, with the counterweight at the base and the hook at the end.

m	<u>3.3</u>	<u>4.4</u>	<u>5.6</u>	<u>7.0</u>	<u>8.3</u>
kg	980	710	550	390	320

### B - V1




Diagram of crane boom B showing a horizontal boom with a counterweight at the base and a hook at the end. The boom is divided into five sections of different lengths, with the counterweight at the base and the hook at the end.

m	<u>3.3</u>	<u>4.4</u>	<u>5.6</u>	<u>7.0</u>	<u>8.3</u>
kg	960	680	520	420	320

### C

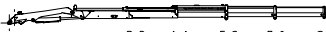


Diagram of crane boom C showing a horizontal boom with a counterweight at the base and a hook at the end. The boom is divided into five sections of different lengths, with the counterweight at the base and the hook at the end.

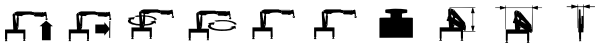
m	<u>3.3</u>	<u>4.4</u>	<u>5.6</u>	<u>7.0</u>	<u>8.3</u>
kg	900	640	490	390	320

The outreaches stated are with a boom angle of 8° and are therefore not the maximum.



# PK 4100

*Compact*



	(mt)	(m)	(°)	(mt)	(MPa)	(l/min)	(kg)	(mm)	(mm)	(mm)
<b>A</b>	3.8	5.8	368	0.44	20.0	10	705	1760	1895	506
<b>B</b>	3.7	7.1	368	0.44	20.0	10	740	1760	1895	506
<b>C</b>	3.6	8.4	368	0.44	20.0	10	780	1760	1895	506

**A - V1, V2**




Diagram of crane boom A showing five configurations with increasing reach. The boom is supported by a pivot on the left and has various hydraulic cylinders and pulleys along its length.

m	<u>3.3</u>	<u>4.5</u>	<u>5.8</u>	<u>7.1</u>	<u>8.4</u>
kg	990	870	660	490	420

**B - V1**




Diagram of crane boom B showing five configurations with increasing reach. The boom is supported by a pivot on the left and has various hydraulic cylinders and pulleys along its length.

m	<u>3.3</u>	<u>4.5</u>	<u>5.8</u>	<u>7.1</u>	<u>8.4</u>
kg	990	860	650	510	420

**C**




Diagram of crane boom C showing five configurations with increasing reach. The boom is supported by a pivot on the left and has various hydraulic cylinders and pulleys along its length.

m	<u>3.3</u>	<u>4.5</u>	<u>5.8</u>	<u>7.1</u>	<u>8.4</u>
kg	990	820	620	490	420

The outreaches stated are with a boom angle of 8° and are therefore not the maximum.

# PK 4501

*Performance*



	(mt)	(m)	(°)	(mt)	(MPa)	(l/min)	(kg)	(mm)	(mm)	(mm)
<b>Std</b>	4.1	5.3	400	0.53	30.0	15-25	639	1830	2106	598
<b>A</b>	3.9	7.2	400	0.53	30.0	15-25	726	1849	2106	598
<b>B</b>	3.8	9.1	400	0.53	30.0	15-25	787	1889	2106	598
<b>C</b>	3.6	11.1	400	0.53	30.0	15-25	846	1929	2106	598

### CE Std



m		<u>4.0</u>	<u>5.1</u>
kg	max. 1000	1000	780

### CE A



m		<u>4.0</u>	<u>5.1</u>	<u>7.1</u>
kg	max. 1000	960	730	520

### CE B - V1, V2



m		<u>4.0</u>	<u>5.1</u>	<u>7.1</u>	<u>9.0</u>	<u>11.0</u>	<u>12.6</u>
kg	max. 1000	920	680	470	360	270	220

### CE - V1



m		<u>4.0</u>	<u>5.1</u>	<u>7.1</u>	<u>9.0</u>	<u>10.9</u>	<u>12.5</u>
kg	max. 1000	880	640	420	310	250	200

### Std



m		<u>3.6</u>	<u>5.1</u>
kg	max. 2830	1130	780

### A



m		<u>3.6</u>	<u>5.1</u>	<u>7.1</u>
kg	max. 2730	1080	730	520

### B - V1, V2



m		<u>3.6</u>	<u>5.1</u>	<u>7.1</u>	<u>9.0</u>	<u>11.0</u>	<u>12.6</u>
kg	max. 2650	1040	680	470	360	270	220

### C - V1

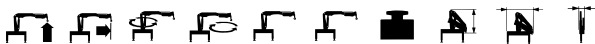


m		<u>3.6</u>	<u>5.1</u>	<u>7.1</u>	<u>9.0</u>	<u>10.9</u>	<u>12.5</u>
kg	max. 2600	1000	640	420	310	250	200

The outreaches stated are with a boom angle of 20° and are therefore not the maximum.

# PK 5001

*Performance*



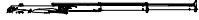
	(mt)	(m)	(°)	(mt)	(MPa)	(l/min)	(kg)	(mm)	(mm)	(mm)
<b>Std</b>	4.5	5.3	400	0.53	33.0	40	684	1830	2106	598
<b>A</b>	4.3	7.2	400	0.53	33.0	40	751	1830	2106	598
<b>B</b>	4.2	9.1	400	0.53	33.0	40	812	1849	2106	598
<b>C</b>	3.0	11.1	400	0.53	33.0	40	871	1889	2106	598

### Std



m		<u>3.6</u>	<u>5.1</u>
kg	max. 2830	1250	870

### A



m		<u>3.6</u>	<u>5.1</u>	<u>7.1</u>
kg	max. 2730	1200	820	590

### B - V1, V2



m		<u>3.6</u>	<u>5.1</u>	<u>7.1</u>	<u>9.0</u>	<u>11.0</u>	<u>12.6</u>
kg	max. 2650	1160	770	530	410	310	220

### C - V1



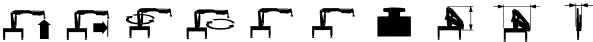
m		<u>3.6</u>	<u>5.1</u>	<u>7.1</u>	<u>9.0</u>	<u>10.9</u>	<u>12.5</u>
kg	max. 2600	1130	730	490	360	290	220

The outreaches stated are with a boom angle of 20° and are therefore not the maximum.



# PK 6001

Performance



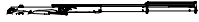
	(mt)	(m)	(°)	(mt)	(MPa)	(l/min)	(kg)	(mm)	(mm)	(mm)
<b>Std</b>	5.4	5.4	400	0.70	30.0	20-30	721	1930	2204	598
<b>A</b>	5.3	7.4	400	0.70	30.0	20-30	796	1930	2204	598
<b>B</b>	5.1	9.3	400	0.70	30.0	20-30	864	1930	2204	598
<b>C</b>	4.9	11.2	400	0.70	30.0	20-30	923	1970	2204	598

### Std



m		<u>3.7</u>	<u>5.3</u>	
kg	max. 3300	1440	1020	

### A



m		<u>3.7</u>	<u>5.3</u>	<u>7.2</u>	
kg	max. 3200	1390	960	700	

### B - V1, V2



m		<u>3.7</u>	<u>5.3</u>	<u>7.2</u>	<u>9.2</u>	<u>11.1</u>	<u>12.7</u>
kg	max. 3140	1350	910	640	500	390	220

### C - V1

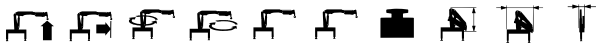


m		<u>3.7</u>	<u>5.3</u>	<u>7.2</u>	<u>9.2</u>	<u>11.1</u>	<u>12.6</u>
kg	max. 3080	1310	860	590	440	360	220

The outreaches stated are with a boom angle of 20° and are therefore not the maximum.

# PK 6500

Performance



	(mt)	(m)	(°)	(mt)	(MPa)	(l/min)	(kg)	(mm)	(mm)	(mm)
<b>Std</b>	5.8	5.7	400	0.70	31.5	20-30	708	1930	2190	598
<b>A</b>	5.6	7.6	400	0.70	31.5	20-30	775	1930	2206	598
<b>B</b>	5.4	9.6	400	0.70	31.5	20-30	836	1930	2309	598

### Std



m		<u>4.0</u>	<u>5.6</u>
kg	max. 3300	1450	1030

### A



m		<u>4.0</u>	<u>5.6</u>	<u>7.5</u>
kg	max. 3200	1400	970	720

### B - V1, V2

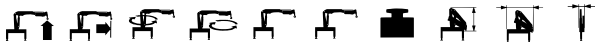


m		<u>4.0</u>	<u>5.6</u>	<u>7.5</u>	<u>9.4</u>	<u>11.4</u>	<u>13.0</u>
kg	max. 3140	1360	920	670	530	330	220

The outreaches stated are with a boom angle of 20° and are therefore not the maximum.

# PK 6501

Performance



	(mt)	(m)	(°)	(mt)	(MPa)	(l/min)	(kg)	(mm)	(mm)	(mm)
<b>Std</b>	6.0	5.4	400	0.70	33.0	40	746	1930	2204	598
<b>A</b>	5.8	7.4	400	0.70	33.0	40	821	1930	2204	598
<b>B</b>	5.6	9.3	400	0.70	33.0	40	889	1930	2204	598
<b>C</b>	5.5	11.2	400	0.70	33.0	40	948	1930	2204	598

### Std



m		<u>3.7</u>	<u>5.3</u>
kg	max. 3300	1600	1140

### A



m		<u>3.7</u>	<u>5.3</u>	<u>7.2</u>
kg	max. 3200	1550	1080	780

### B - V1, V2



m		<u>3.7</u>	<u>5.3</u>	<u>7.2</u>	<u>9.2</u>	<u>11.1</u>	<u>12.7</u>
kg	max. 3140	1500	1020	720	560	400	220

### C - V1



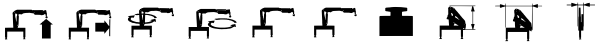
m		<u>3.7</u>	<u>5.3</u>	<u>7.2</u>	<u>9.2</u>	<u>11.1</u>	<u>12.6</u>
kg	max. 3080	1470	980	670	510	420	220

The outreaches stated are with a boom angle of 20° and are therefore not the maximum.



# PKG 7001

## Performance



	(mt)	(m)	(°)	(mt)	(MPa)	(l/min)	(kg)	(mm)	(mm)	(mm)
<b>Std</b>	6.1	4.9	400	0.80	33.0	20-30	692	1930	2192	598
<b>A</b>	5.9	6.9	400	0.80	33.0	20-30	759	1930	2192	598

### Std



m		<u>3.3</u>	<u>4.8</u>
kg	max. 3300	1820	1270

### A - V1, V2

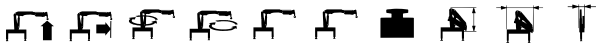


m		<u>3.3</u>	<u>4.8</u>	<u>6.7</u>	<u>8.7</u>	<u>10.7</u>
kg	max. 3200	1770	1220	870	570	350

The outreaches stated are with a boom angle of 20° and are therefore not the maximum.


# PK 8500

*Performance*



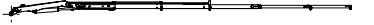
	(mt)	(m)	(°)	(mt)	(MPa)	(l/min)	(kg)	(mm)	(mm)	(mm)
<b>Std</b>	7.6	5.7	400	0.90	31.5	25-35	875	1996	2295	660
<b>A</b>	7.4	7.6	400	0.90	31.5	25-35	950	1996	2295	660
<b>B</b>	7.2	9.6	400	0.90	31.5	25-35	1018	1996	2295	660

### Std




m		<u>4.0</u>	<u>5.6</u>
kg	max. 3300	1920	1360

### A - V1, V2, V3



m		<u>4.0</u>	<u>5.6</u>	<u>7.5</u>	<u>9.5</u>	<u>11.5</u>	<u>13.1</u>
kg	max. 3200	1860	1300	1000	740	400	150

### B - V1, V2



m		<u>4.0</u>	<u>5.6</u>	<u>7.5</u>	<u>9.4</u>	<u>11.5</u>	<u>13.1</u>
kg	max. 3140	1810	1250	910	720	400	150

The outreaches stated are with a boom angle of 20° and are therefore not the maximum.

# PK 8501

High Performance



**KTL**  
protected

**Paltronic 50**  
controlled

**RRC** \*)  
Radio Remote Control  
operated

**ISC** \*)  
Integrated Stability Control  
monitored



	(mt)	(m)	(°)	(mt)	(MPa)	(l/min)	(kg)	(mm)	(mm)	(mm)
<b>Std</b>	7.8	5.6	400	1.0	32.0	25-35	1022	2004	2320	690
<b>A</b>	7.6	7.6	400	1.0	32.0	25-35	1119	2004	2320	690
<b>B</b>	7.3	9.7	400	1.0	32.0	25-35	1224	2004	2320	690
<b>C</b>	7.1	11.8	400	1.0	32.0	25-35	1320	2004	2320	690
<b>D</b>	6.8	14.0	400	1.0	32.0	25-35	1416	2030	2340	730

**Std**

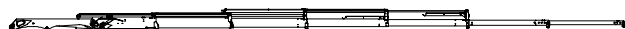
m		<u>3.5</u>	<u>5.4</u>
kg	max. 5400	2200	1440

**A**

m		<u>3.6</u>	<u>5.5</u>	<u>7.4</u>
kg	max. 5200	2100	1340	1000

**B - V1, V2**

m		<u>3.7</u>	<u>5.6</u>	<u>7.5</u>	<u>9.5</u>	<u>11.7</u>	<u>13.7</u>
kg	max. 5000	2000	1240	900	700	520	410

**C - V1, V2**

m		<u>3.8</u>	<u>5.7</u>	<u>7.6</u>	<u>9.6</u>	<u>11.6</u>	<u>13.6</u>	<u>15.6</u>
kg	max. 4900	1880	1140	800	600	480	380	300

**D - V1**

m		<u>3.9</u>	<u>5.8</u>	<u>7.7</u>	<u>9.7</u>	<u>11.7</u>	<u>13.7</u>	<u>15.7</u>
kg	max. 4800	1760	1060	710	510	400	320	260

\*Optional features

The outreaches stated are with a boom angle of 20° and are therefore not the maximum.

# PK 8501 · K

High Performance

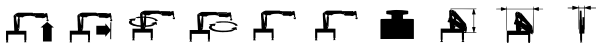


**KTL**  
protected

**Paltronic  
50**  
controlled

**RRC** \*)  
Radio Remote Control  
operated

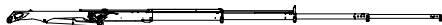
**ISC** \*)  
Integrated Stability Control  
monitored



	(mt)	(m)	(°)	(mt)	(MPa)	(l/min)	(kg)	(mm)	(mm)	(mm)
<b>Std</b>	7.9	5.4	400	1.0	32.0	25-35	988	2005	2320	675
<b>A</b>	7.7	7.3	400	1.0	32.0	25-35	1061	2005	2320	675

**Std**

m		<u>3.4</u>	<u>5.2</u>
kg	max. 3300	2300	1520

**A - V1, V2**

m		<u>3.5</u>	<u>5.3</u>	<u>7.1</u>	<u>9.1</u>	<u>11.1</u>
kg	max. 3300	2200	1440	1060	570	330

\*Optional features

The outreaches stated are with a boom angle of 20° and are therefore not the maximum.



# PK 8502

High Performance



**KTL**  
protected

**Paltronic 50**  
controlled


**RRC** \*)  
Radio Remote Control  
operated

**ISC** \*)  
Integrated Stability Control  
monitored




	(mt)	(m)	(°)	(mt)	(MPa)	(l/min)	(kg)	(mm)	(mm)	(mm)
<b>Std</b>	8.2	5.8	400	1.0	32.0	25-35	1044	2150	2325	700
<b>A</b>	7.9	7.7	400	1.0	32.0	25-35	1141	2150	2325	700
<b>B</b>	7.6	9.9	400	1.0	32.0	25-35	1246	2150	2325	700
<b>C</b>	7.4	12.0	400	1.0	32.0	25-35	1342	2150	2330	700
<b>D</b>	7.1	14.1	400	1.0	32.0	25-35	1438	2150	2380	735

**Std**




m		<u>3.7</u>	<u>5.6</u>
kg	max. 5700	2200	1460

**A**




m		<u>3.8</u>	<u>5.7</u>	<u>7.6</u>
kg	max. 5580	2080	1360	1010

**B - V1, V2**




m		<u>3.9</u>	<u>5.8</u>	<u>7.7</u>	<u>9.7</u>	<u>11.9</u>	<u>13.9</u>
kg	max. 5460	1960	1260	910	710	540	430

**C - V1, V2**



m		<u>3.9</u>	<u>5.8</u>	<u>7.7</u>	<u>9.8</u>	<u>11.8</u>	<u>13.8</u>	<u>15.8</u>
kg	max. 5360	1860	1160	820	620	500	400	320

**D - V1**



m		<u>4.0</u>	<u>5.9</u>	<u>7.8</u>	<u>9.9</u>	<u>11.9</u>	<u>13.9</u>	<u>16.0</u>
kg	max. 5260	1760	1080	740	530	410	340	270

\*Optional features

The outreaches stated are with a boom angle of 20° and are therefore not the maximum.

# PK 9001 · EH

High Performance



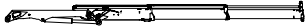
	(mt)	(m)	(°)	(mt)	(MPa)	(l/min)	(kg)	(mm)	(mm)	(mm)
<b>Std</b>	8.7	5.6	400	1.0	35.0	40-50	1047	2004	2320	690
<b>A</b>	8.4	7.6	400	1.0	35.0	40-50	1144	2004	2320	690
<b>B</b>	8.2	9.7	400	1.0	35.0	40-50	1249	2004	2320	690
<b>C</b>	7.9	11.8	400	1.0	35.0	40-50	1345	2004	2320	690
<b>D</b>	7.7	14.0	400	1.0	35.0	40-50	1441	2030	2340	730

**Std**



m		<u>3.5</u>	<u>5.4</u>
kg	max. 5400	2450	1600

**A**



m		<u>3.6</u>	<u>5.5</u>	<u>7.4</u>
kg	max. 5200	2350	1500	1120

**B - V1, V2**



m		<u>3.7</u>	<u>5.6</u>	<u>7.5</u>	<u>9.5</u>	<u>11.7</u>	<u>13.7</u>
kg	max. 5000	2200	1400	1020	780	600	470

**C - V1, V2**



m		<u>3.8</u>	<u>5.7</u>	<u>7.6</u>	<u>9.6</u>	<u>11.6</u>	<u>13.6</u>	<u>15.6</u>
kg	max. 4900	2100	1300	920	700	560	440	350

**D - V1**



m		<u>3.9</u>	<u>5.8</u>	<u>7.7</u>	<u>9.7</u>	<u>11.7</u>	<u>13.7</u>	<u>15.7</u>
kg	max. 4800	2000	1200	830	600	470	380	300

\*Optional features

The outreaches stated are with a boom angle of 20° and are therefore not the maximum.

# PK 9002 · EH

High Performance



**KTL**  
protected

**Paltronic 50**  
controlled

**RRC**  
Radio Remote Control  
operated

**ISC** \*)  
Integrated Stability Control  
monitored

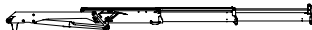
**AOS** \*)  
Active On Board Suspension  
inside



	(mt)	(m)	(°)	(mt)	(MPa)	(l/min)	(kg)	(mm)	(mm)	(mm)
<b>Std</b>	9.1	5.8	400	1.0	35.0	40-50	1069	2150	2325	700
<b>A</b>	8.8	7.7	400	1.0	35.0	40-50	1166	2150	2325	700
<b>B</b>	8.5	9.9	400	1.0	35.0	40-50	1271	2150	2325	700
<b>C</b>	8.2	12.0	400	1.0	35.0	40-50	1367	2150	2330	700
<b>D</b>	7.9	14.1	400	1.0	35.0	40-50	1463	2150	2380	735

**Std**

m		<u>3.7</u>	<u>5.6</u>
kg	max. 5700	2450	1620

**A**

m		<u>3.8</u>	<u>5.7</u>	<u>7.6</u>
kg	max. 5580	2350	1520	1140

**B - V1, V2**

m		<u>3.9</u>	<u>5.8</u>	<u>7.7</u>	<u>9.7</u>	<u>11.9</u>	<u>13.9</u>
kg	max. 5460	2200	1420	1040	800	620	500

**C - V1, V2**

m		<u>3.9</u>	<u>5.8</u>	<u>7.7</u>	<u>9.8</u>	<u>11.8</u>	<u>13.8</u>	<u>15.8</u>
kg	max. 5360	2100	1320	940	710	580	460	380

**D - V1**

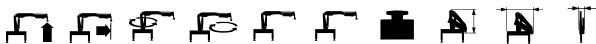
m		<u>4.0</u>	<u>5.9</u>	<u>7.8</u>	<u>9.9</u>	<u>11.9</u>	<u>13.9</u>	<u>16.0</u>
kg	max. 5260	2000	1220	850	620	500	410	330

\*Optional features

The outreaches stated are with a boom angle of 20° and are therefore not the maximum.

# PK 10000

*Performance*



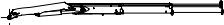
	(mt)	(m)	(°)	(mt)	(MPa)	(l/min)	(kg)	(mm)	(mm)	(mm)
<b>Std</b>	9.5	6.2	400	1.20	31.5	30-45	1031	2016	2415	657
<b>A</b>	9.2	8.2	400	1.20	31.5	30-45	1129	2016	2440	657
<b>B</b>	8.9	10.3	400	1.20	31.5	30-45	1232	2016	2500	657
<b>C</b>	8.6	12.4	400	1.20	31.5	30-45	1327	2016	2500	657

### Std



m		<u>4.4</u>	<u>6.1</u>
kg	max. 5700	2160	1570

### A



m		<u>4.4</u>	<u>6.1</u>	<u>8.0</u>
kg	max. 5580	2080	1490	1120

### B - V1, V2, V3



m		<u>4.4</u>	<u>6.1</u>	<u>8.0</u>	<u>10.1</u>	<u>12.3</u>	<u>14.3</u>	<u>16.4</u>
kg	max. 5460	2010	1410	1030	800	620	480	330

### C - V1, V2



m		<u>4.4</u>	<u>6.1</u>	<u>8.0</u>	<u>10.1</u>	<u>12.2</u>	<u>14.2</u>	<u>16.3</u>
kg	max. 5360	1950	1340	950	720	590	480	330

The outreaches stated are with a boom angle of 20° and are therefore not the maximum.



# PK 11001

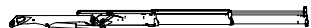
High Performance



	(mt)	(m)	(°)	(mt)	(MPa)	(l/min)	(kg)	(mm)	(mm)	(mm)
<b>Std</b>	10.0	5.8	400	1.3	32.0	30-45	1115	2105	2395	690
<b>A</b>	9.6	7.8	400	1.3	32.0	30-45	1225	2105	2395	690
<b>B</b>	9.3	9.9	400	1.3	32.0	30-45	1341	2105	2395	690
<b>C</b>	9.0	12.0	400	1.3	32.0	30-45	1446	2105	2395	690
<b>D</b>	8.8	14.2	400	1.3	32.0	30-45	1542	2105	2395	730

**Std**

m		<u>3.7</u>	<u>5.6</u>
kg	max. 5700	2650	1780

**A**

m		<u>3.8</u>	<u>5.7</u>	<u>7.6</u>
kg	max. 5580	2550	1660	1240

**B - V1, V2**

m		<u>3.9</u>	<u>5.8</u>	<u>7.7</u>	<u>9.7</u>	<u>11.9</u>	<u>13.9</u>
kg	max. 5460	2400	1540	1120	870	680	550

**C - V1, V2**

m		<u>4.0</u>	<u>5.9</u>	<u>7.8</u>	<u>9.8</u>	<u>11.8</u>	<u>13.8</u>	<u>15.8</u>
kg	max. 5360	2300	1440	1020	780	630	510	380

**D - V1**

m		<u>4.1</u>	<u>5.9</u>	<u>7.9</u>	<u>9.9</u>	<u>11.9</u>	<u>13.9</u>	<u>15.9</u>
kg	max. 5260	2150	1340	930	680	540	450	370

\*Optional features

The outreaches stated are with a boom angle of 20° and are therefore not the maximum.

# PK 11001-K

High Performance



**KTL**  
protected

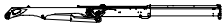
**Paltronic  
50**  
controlled

**RRC** \*)  
Radio Remote Control  
operated

**ISC** \*)  
Integrated Stability Control  
monitored



	(mt)	(m)	(°)	(mt)	(MPa)	(l/min)	(kg)	(mm)	(mm)	(mm)
<b>Std</b>	10.1	5.5	400	1.3	32.0	30-45	1072	2105	2395	675
<b>A</b>	9.8	7.5	400	1.3	32.0	30-45	1153	2105	2395	675

**Std**

m		<u>3.6</u>	<u>5.4</u>
kg	max. 3300	2800	1880

**A - V1, V2**

m		<u>3.7</u>	<u>5.5</u>	<u>7.3</u>	<u>9.3</u>	<u>11.2</u>
kg	max. 3300	2700	1800	1340	700	380

\*Optional features

The outreaches stated are with a boom angle of 20° and are therefore not the maximum.

# PK 11002

High Performance



**KTL**  
protected

**Paltronic 50**  
controlled


**RRC** \*)  
Radio Remote Control  
operated

**ISC** \*)  
Integrated Stability Control  
monitored



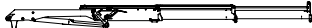
	(mt)	(m)	(°)	(mt)	(MPa)	(l/min)	(kg)	(mm)	(mm)	(mm)
<b>Std</b>	10.0	5.8	400	1.3	32.0	30-45	1133	2150	2325	700
<b>A</b>	9.7	7.7	400	1.3	32.0	30-45	1243	2150	2325	700
<b>B</b>	9.3	9.9	400	1.3	32.0	30-45	1359	2150	2325	700
<b>C</b>	9.1	12.0	400	1.3	32.0	30-45	1464	2150	2330	700
<b>D</b>	8.8	14.1	400	1.3	32.0	30-45	1560	2150	2380	735

**Std**




m		<u>3.7</u>	<u>5.6</u>
kg	max. 5700	2700	1780

**A**




m		<u>3.8</u>	<u>5.7</u>	<u>7.6</u>
kg	max. 5580	2550	1680	1240

**B - V1, V2**



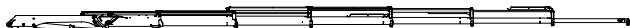
m		<u>3.9</u>	<u>5.8</u>	<u>7.7</u>	<u>9.7</u>	<u>11.9</u>	<u>13.9</u>
kg	max. 5460	2450	1560	1140	880	670	550

**C - V1, V2**



m		<u>3.9</u>	<u>5.8</u>	<u>7.7</u>	<u>9.8</u>	<u>11.8</u>	<u>13.8</u>	<u>15.8</u>
kg	max. 5360	2300	1460	1040	780	640	510	380

**D - V1**



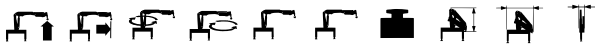
m		<u>4.0</u>	<u>5.9</u>	<u>7.8</u>	<u>9.9</u>	<u>11.9</u>	<u>13.9</u>	<u>16.0</u>
kg	max. 5260	2200	1360	940	700	540	460	370

\*Optional features

The outreaches stated are with a boom angle of 20° and are therefore not the maximum.


# PK 11502

## Performance



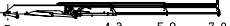
	(mt)	(m)	(°)	(mt)	(MPa)	(l/min)	(kg)	(mm)	(mm)	(mm)
<b>Std</b>	10.9	6.1	420	1.40	30.0	35-50	1556	2205	2500	800
<b>A</b>	10.4	8.1	420	1.40	30.0	35-50	1706	2205	2500	800
<b>B</b>	10.0	10.3	420	1.40	30.0	35-50	1841	2205	2500	800
<b>C</b>	9.7	12.6	420	1.40	30.0	35-50	1953	2205	2500	890
<b>D</b>	9.4	14.8	420	1.40	30.0	35-50	2057	2205	2500	890
<b>E</b>	9.1	17.0	420	1.40	30.0	35-50	2158	2205	2550	930

### Std




m		<u>4.3</u>	<u>5.9</u>
kg	max. 6200	2500	1820

### A




m		<u>4.3</u>	<u>5.9</u>	<u>7.9</u>
kg	max. 6100	2420	1690	1250

### B - V1, V2, V3



m		<u>4.3</u>	<u>5.9</u>	<u>7.9</u>	<u>10.2</u>	<u>12.4</u>	<u>14.6</u>	<u>16.8</u>
kg	max. 6000	2330	1580	1130	870	640	490	380

### B - PJ060A JV2




m					<u>13.3</u>	<u>15.0</u>	<u>16.9</u>	<u>18.8</u>	<u>20.8</u>
kg					300	250	220	160	110

### B - PJ060B JV2




m					<u>13.3</u>	<u>15.0</u>	<u>16.9</u>	<u>18.8</u>	<u>20.8</u>	<u>22.8</u>
kg					240	190	160	140	90	60

### C - V1, V2, V3




m		<u>4.3</u>	<u>5.9</u>	<u>7.9</u>	<u>10.2</u>	<u>12.4</u>	<u>14.6</u>	<u>16.8</u>	<u>18.8</u>
kg	max. 5850	2250	1500	1040	770	620	470	360	290

### C - PJ040C JV2



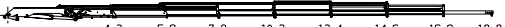
m						<u>15.4</u>	<u>17.2</u>	<u>19.0</u>	<u>21.0</u>	<u>22.6</u>
kg						230	200	180	130	110

### D - V1, V2



m		<u>4.3</u>	<u>5.9</u>	<u>7.9</u>	<u>10.2</u>	<u>12.4</u>	<u>14.6</u>	<u>16.8</u>	<u>18.8</u>
kg	max. 5750	2190	1430	960	690	530	440	340	270

### E - V1



m		<u>4.3</u>	<u>5.9</u>	<u>7.9</u>	<u>10.2</u>	<u>12.4</u>	<u>14.6</u>	<u>16.9</u>	<u>18.8</u>
kg	max. 5650	2120	1350	880	590	440	340	290	230

The outreaches stated are with a boom angle of 20° and are therefore not the maximum.




# PK 12000

Performance



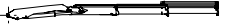
	(mt)	(m)	(°)	(mt)	(MPa)	(l/min)	(kg)	(mm)	(mm)	(mm)
<b>Std</b>	11.6	6.2	420	1.40	30.0	35-50	1380	2202	2489	775
<b>A</b>	11.3	8.2	420	1.40	30.0	35-50	1491	2202	2489	791
<b>B</b>	11.0	10.3	420	1.40	30.0	35-50	1607	2202	2489	806
<b>C</b>	10.6	12.4	420	1.40	30.0	35-50	1713	2202	2489	821
<b>D</b>	10.3	14.6	420	1.40	30.0	35-50	1811	2202	2489	836

### Std




m		<u>4.5</u>	<u>6.1</u>
kg	max. 6790	2590	1910

### A




m		<u>4.5</u>	<u>6.1</u>	<u>8.1</u>
kg	max. 6680	2510	1820	1360

### B - V1, V2, V3




m		<u>4.5</u>	<u>6.1</u>	<u>8.1</u>	<u>10.2</u>	<u>12.3</u>	<u>14.3</u>	<u>16.4</u>
kg	max. 6560	2420	1720	1260	980	770	620	380

### C - V1, V2



m		<u>4.5</u>	<u>6.1</u>	<u>8.1</u>	<u>10.2</u>	<u>12.2</u>	<u>14.2</u>	<u>16.3</u>
kg	max. 6460	2350	1640	1170	890	720	590	380

### D - V1

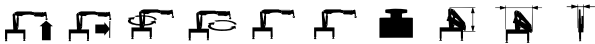


m		<u>4.5</u>	<u>6.1</u>	<u>8.1</u>	<u>10.2</u>	<u>12.2</u>	<u>14.3</u>	<u>16.4</u>
kg	max. 6360	2280	1570	1090	800	640	530	380

The outreaches stated are with a boom angle of 20° and are therefore not the maximum.

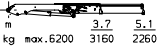
# PKG 12001

*Performance*

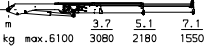


	(mt)	(m)	(°)	(mt)	(MPa)	(l/min)	(kg)	(mm)	(mm)	(mm)
<b>Std</b>	11.6	5.2	420	1.50	30.0	40-60	1455	2205	2500	700
<b>A</b>	11.4	7.2	420	1.50	30.0	40-60	1566	2205	2500	710
<b>B</b>	11.1	9.4	420	1.50	30.0	40-60	1669	2205	2500	725

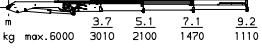
**Std**



**A**



**B**



The outreaches stated are with a boom angle of 20° and are therefore not the maximum.

# PK 12001 · EH

High Performance



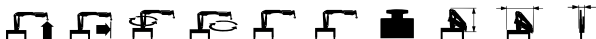
**KTL**  
protected

**Paltronic 50**  
controlled

**RRC** <sup>\*)</sup>  
Radio Remote Control  
operated

**ISC** <sup>\*)</sup>  
Integrated Stability Control  
monitored

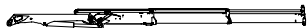
**AOS** <sup>\*)</sup>  
Active On Board Suspension  
inside



	(mt)	(m)	(°)	(mt)	(MPa)	(l/min)	(kg)	(mm)	(mm)	(mm)
<b>Std</b>	11.1	5.8	400	1.3	35.0	45-60	1140	2105	2395	690
<b>A</b>	10.7	7.8	400	1.3	35.0	45-60	1250	2105	2395	690
<b>B</b>	10.4	9.9	400	1.3	35.0	45-60	1366	2105	2395	690
<b>C</b>	10.1	12.0	400	1.3	35.0	45-60	1471	2105	2395	690
<b>D</b>	9.9	14.2	400	1.3	35.0	45-60	1567	2105	2395	730

**Std**

m		<u>3.7</u>	<u>5.6</u>
kg	max. 5700	2950	1960

**A**

m		<u>3.8</u>	<u>5.7</u>	<u>7.6</u>
kg	max. 5580	2800	1860	1380

**B - V1, V2**

m		<u>3.9</u>	<u>5.8</u>	<u>7.7</u>	<u>9.7</u>	<u>11.9</u>	<u>13.9</u>
kg	max. 5460	2650	1740	1280	1000	770	630

**C - V1, V2**

m		<u>4.0</u>	<u>5.9</u>	<u>7.8</u>	<u>9.8</u>	<u>11.8</u>	<u>13.8</u>	<u>15.8</u>
kg	max. 5360	2550	1620	1160	900	730	600	380

**D - V1**

m		<u>4.1</u>	<u>5.9</u>	<u>7.9</u>	<u>9.9</u>	<u>11.9</u>	<u>13.9</u>	<u>15.9</u>
kg	max. 5260	2450	1520	1080	800	630	530	380

\*Optional features

The outreaches stated are with a boom angle of 20° and are therefore not the maximum.

# PK 12002 · EH

High Performance



**KTL**  
protected

**Paltronic  
50**  
controlled

**RRC**  
Radio Remote Control  
operated


**ISC** \*)  
Integrated Stability Control  
monitored

**AOS** \*)  
Active On Board Suspension  
inside



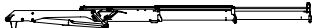
	(mt)	(m)	(°)	(mt)	(MPa)	(l/min)	(kg)	(mm)	(mm)	(mm)
<b>Std</b>	11.0	5.8	400	1.3	35.0	45-60	1158	2150	2325	700
<b>A</b>	10.7	7.7	400	1.3	35.0	45-60	1268	2150	2325	700
<b>B</b>	10.4	9.9	400	1.3	35.0	45-60	1384	2150	2325	700
<b>C</b>	10.1	12.0	400	1.3	35.0	45-60	1489	2150	2330	700
<b>D</b>	9.8	14.1	400	1.3	35.0	45-60	1585	2150	2380	735

**Std**




m		<u>3.7</u>	<u>5.6</u>
kg	max. 5700	3000	2000

**A**




m		<u>3.8</u>	<u>5.7</u>	<u>7.6</u>
kg	max. 5580	2850	1860	1380

**B - V1, V2**




m		<u>3.9</u>	<u>5.8</u>	<u>7.7</u>	<u>9.7</u>	<u>11.9</u>	<u>13.9</u>
kg	max. 5460	2700	1740	1280	1000	780	630

**C - V1, V2**



m		<u>3.9</u>	<u>5.8</u>	<u>7.7</u>	<u>9.8</u>	<u>11.8</u>	<u>13.8</u>	<u>15.8</u>
kg	max. 5360	2550	1640	1180	900	730	600	380

**D - V1**



m		<u>4.0</u>	<u>5.9</u>	<u>7.8</u>	<u>9.9</u>	<u>11.9</u>	<u>13.9</u>	<u>16.0</u>
kg	max. 5260	2450	1540	1080	800	640	530	380

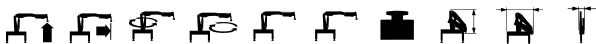
\*Optional features

The outreaches stated are with a boom angle of 20° and are therefore not the maximum.




# PKK 12500

*Advantage*




	(mt)	(m)	(°)	(mt)	(MPa)	(l/min)	(kg)	(mm)	(mm)	(mm)
<b>Std</b>	11.7	5.6	420	1.40	30.0	35-50	1357	2205	2500	700
<b>A</b>	11.4	7.6	420	1.40	30.0	35-50	1468	2205	2500	710
<b>B</b>	11.1	9.7	420	1.40	30.0	35-50	1571	2205	2500	725

### Std




m	<u>4.0</u>	<u>5.5</u>	
kg	max. 6200	2890	2130

### A - V1, V2, V3



m	<u>4.0</u>	<u>5.5</u>	<u>7.5</u>	<u>9.7</u>	<u>11.9</u>	<u>13.9</u>	
kg	max. 6100	2810	2040	1480	1100	700	480

### B - V1, V2

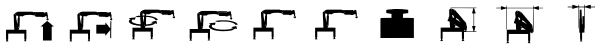


m	<u>4.0</u>	<u>5.5</u>	<u>7.5</u>	<u>9.6</u>	<u>11.9</u>	<u>13.8</u>	
kg	max. 6000	2740	1960	1400	1080	700	480

The outreaches stated are with a boom angle of 20° and are therefore not the maximum.


# PK 12502

## Performance



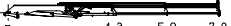
	(mt)	(m)	(°)	(mt)	(MPa)	(l/min)	(kg)	(mm)	(mm)	(mm)
<b>Std</b>	12.1	6.1	420	1.40	33.0	50-70	1581	2205	2500	800
<b>A</b>	11.6	8.1	420	1.40	33.0	50-70	1731	2205	2500	800
<b>B</b>	11.2	10.3	420	1.40	33.0	50-70	1866	2205	2500	800
<b>C</b>	10.9	12.6	420	1.40	33.0	50-70	1978	2205	2500	890
<b>D</b>	10.6	14.8	420	1.40	33.0	50-70	2082	2205	2500	890
<b>E</b>	10.3	17.0	420	1.40	33.0	50-70	2183	2205	2500	930

### Std



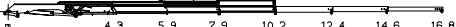
m		<u>4.3</u>	<u>5.9</u>
kg	max. 6200	2790	2030

### A



m		<u>4.3</u>	<u>5.9</u>	<u>7.9</u>
kg	max. 6100	2700	1890	1400

### B - V1, V2, V3



m		<u>4.3</u>	<u>5.9</u>	<u>7.9</u>	<u>10.2</u>	<u>12.4</u>	<u>14.6</u>	<u>16.8</u>
kg	max. 6000	2610	1790	1290	990	740	570	450

### B - PJ060A JV2



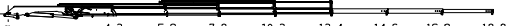
m					<u>13.3</u>	<u>15.0</u>	<u>16.9</u>	<u>18.8</u>	<u>20.8</u>
kg					400	340	290	220	170

### B - PJ060B JV2




m					<u>13.3</u>	<u>15.0</u>	<u>16.9</u>	<u>18.8</u>	<u>20.8</u>	<u>22.8</u>
kg					340	270	230	200	150	110

### C - V1, V2, V3




m		<u>4.3</u>	<u>5.9</u>	<u>7.9</u>	<u>10.2</u>	<u>12.4</u>	<u>14.6</u>	<u>16.8</u>	<u>18.8</u>
kg	max. 5850	2540	1710	1200	890	720	560	440	360

### C - PJ040A JV2




m						<u>15.4</u>	<u>17.2</u>	<u>19.0</u>	<u>21.0</u>	<u>22.6</u>
kg						320	270	240	190	160

### D - V1, V2



m		<u>4.3</u>	<u>5.9</u>	<u>7.9</u>	<u>10.2</u>	<u>12.4</u>	<u>14.6</u>	<u>16.8</u>	<u>18.8</u>
kg	max. 5750	2470	1630	1110	800	630	520	410	330

### E - V1

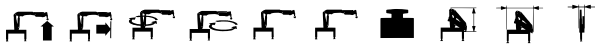


m		<u>4.3</u>	<u>5.9</u>	<u>7.9</u>	<u>10.2</u>	<u>12.4</u>	<u>14.6</u>	<u>16.9</u>	<u>18.8</u>
kg	max. 5650	2410	1560	1030	720	540	430	360	290

The outreaches stated are with a boom angle of 20° and are therefore not the maximum.

# PK 15002

## Performance



	(mt)	(m)	(°)	(mt)	(MPa)	(l/min)	(kg)	(mm)	(mm)	(mm)
<b>Std</b>	13.9	6.1	420	1.80	30.0	40-60	1647	2205	2500	800
<b>A</b>	13.4	8.1	420	1.80	30.0	40-60	1797	2205	2500	800
<b>B</b>	13.0	10.3	420	1.80	30.0	40-60	1932	2205	2500	800
<b>C</b>	12.7	12.6	420	1.80	30.0	40-60	2057	2205	2500	890
<b>D</b>	12.4	14.8	420	1.80	30.0	40-60	2172	2205	2500	890
<b>E</b>	12.0	17.0	420	1.80	30.0	40-60	2283	2205	2500	930

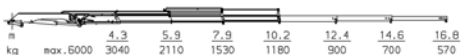
### Std



### A



### B - V1, V2, V3



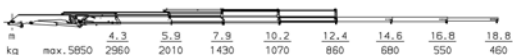
### B - PJ060A JV2



### B - PJ060B JV2



### C - V1, V2, V3



### C - PJ060A JV2



### C - PJ060B JV2



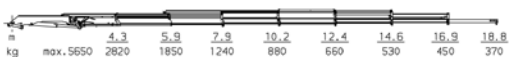
### D - V1, V2



### D - PJ040A JV2



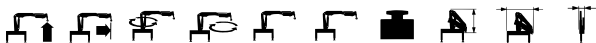
### E - V1



The outreaches stated are with a boom angle of 20° and are therefore not the maximum.


# PK 15500

Performance



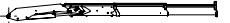
	(mt)	(m)	(°)	(mt)	(MPa)	(l/min)	(kg)	(mm)	(mm)	(mm)
<b>Std</b>	14.6	6.2	420	1.80	30.0	40-60	1619	2200	2500	810
<b>A</b>	14.1	8.1	420	1.80	30.0	40-60	1769	2200	2500	810
<b>B</b>	13.7	10.3	420	1.80	30.0	40-60	1904	2200	2500	810
<b>C</b>	13.3	12.4	420	1.80	30.0	40-60	2029	2200	2500	810
<b>D</b>	12.8	14.5	420	1.80	30.0	40-60	2170	2200	2500	920

**Std**




m		<u>4.5</u>	<u>6.1</u>
kg	max. 6200	3260	2380

**A**




m		<u>4.5</u>	<u>6.1</u>	<u>8.0</u>
kg	max. 6100	3140	2250	1690

**B - V1, V2, V3**




m		<u>4.5</u>	<u>6.1</u>	<u>8.0</u>	<u>10.1</u>	<u>12.3</u>	<u>14.4</u>	<u>16.6</u>
kg	max. 6000	3040	2140	1570	1230	930	740	600

**C - V1, V2, V3**



m		<u>4.5</u>	<u>6.1</u>	<u>8.0</u>	<u>10.1</u>	<u>12.2</u>	<u>14.3</u>	<u>16.5</u>	<u>18.4</u>
kg	max. 5850	2960	2050	1470	1110	910	710	580	480

**D - V1, V2**



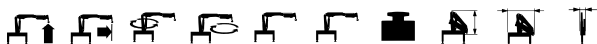
m		<u>4.5</u>	<u>6.1</u>	<u>8.0</u>	<u>10.1</u>	<u>12.2</u>	<u>14.3</u>	<u>16.5</u>	<u>18.4</u>
kg	max. 5750	2860	1940	1350	990	780	650	520	430

The outreaches stated are with a boom angle of 20° and are therefore not the maximum.




# PKK 15500

*Advantage*




	(mt)	(m)	(°)	(mt)	(MPa)	(l/min)	(kg)	(mm)	(mm)	(mm)
<b>Std</b>	14.8	5.6	420	1.80	30.0	40-60	1509	2205	2495	780
<b>A</b>	14.5	7.6	420	1.80	30.0	40-60	1620	2205	2495	790
<b>B</b>	14.2	9.7	420	1.80	30.0	40-60	1735	2205	2495	805

### Std




m	<u>4.0</u>	<u>5.5</u>
kg	max. 6200 3670	2710

### A - V1, V2, V3



m	<u>4.0</u>	<u>5.5</u>	<u>7.4</u>	<u>9.5</u>	<u>11.8</u>	<u>13.9</u>
kg	max. 6100 3580	2610	1940	1450	900	550

### B - V1, V2

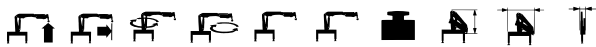


m	<u>4.0</u>	<u>5.5</u>	<u>7.4</u>	<u>9.4</u>	<u>11.7</u>	<u>13.8</u>
kg	max. 6000 3510	2530	1830	1420	900	550

The outreaches stated are with a boom angle of 20° and are therefore not the maximum.

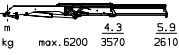
# PK 16502

## Performance

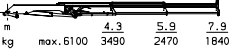


	(mt)	(m)	(°)	(mt)	(MPa)	(l/min)	(kg)	(mm)	(mm)	(mm)
<b>Std</b>	15.5	6.1	420	1.80	33.0	60-80	1672	2205	2500	800
<b>A</b>	14.9	8.1	420	1.80	33.0	60-80	1822	2205	2500	800
<b>B</b>	14.5	10.3	420	1.80	33.0	60-80	1957	2205	2500	800
<b>C</b>	14.2	12.6	420	1.80	33.0	60-80	2082	2205	2500	890
<b>D</b>	13.9	14.8	420	1.80	33.0	60-80	2197	2205	2500	890
<b>E</b>	13.5	17.0	420	1.80	33.0	60-80	2308	2205	2500	930

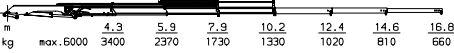
**Std**



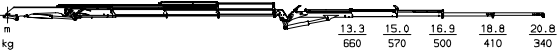
**A**



**B - V1, V2, V3**



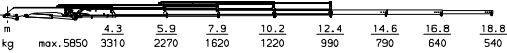
**B - PJ060A JV2**



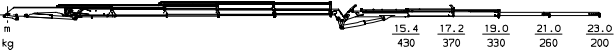
**B - PJ060B JV2**



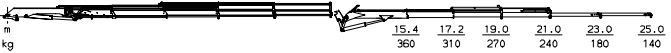
**C - V1, V2, V3**



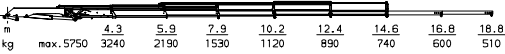
**C - PJ060A JV2**



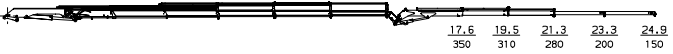
**C - PJ060B JV2**



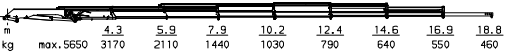
**D - V1, V2**



**D - PJ040A JV2**



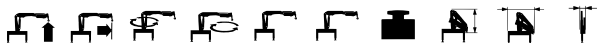
**E - V1**



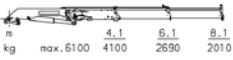
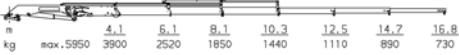
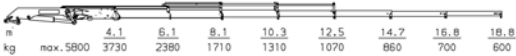
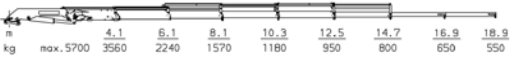
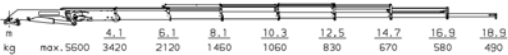
The outreaches stated are with a boom angle of 20° and are therefore not the maximum.

# PK 17502

## Performance



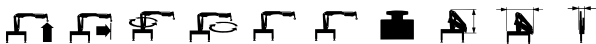
	(mt)	(m)	(°)	(mt)	(MPa)	(l/min)	(kg)	(mm)	(mm)	(mm)
<b>A</b>	16.4	8.2	400	2.30	30.0	45-65	2255	2295	2500	890
<b>B</b>	16.0	10.4	400	2.30	30.0	45-65	2424	2295	2500	890
<b>C</b>	15.6	12.6	400	2.30	30.0	45-65	2559	2295	2500	940
<b>D</b>	15.2	14.9	400	2.30	30.0	45-65	2689	2295	2500	1010
<b>E</b>	14.8	17.1	400	2.30	30.0	45-65	2810	2295	2500	1010

**A****B - V1, V2, V3****B - PJ060A JV2****B - PJ060B JV2****C - V1, V2, V3****C - PJ060A JV2****C - PJ060B JV2****D - V1, V2****D - PJ040A JV2****E - V1**

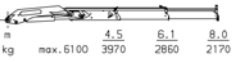
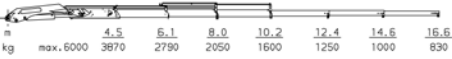
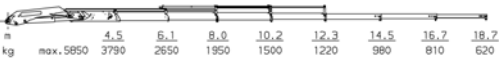
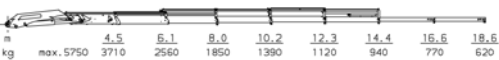
The outraches stated are with a boom angle of 20° and are therefore not the maximum.

# PK 18500

Performance



	(mt)	(m)	(°)	(mt)	(MPa)	(l/min)	(kg)	(mm)	(mm)	(mm)
<b>A</b>	17.9	8.2	400	2.30	30.0	45-65	2117	2300	2500	873
<b>B</b>	17.4	10.3	400	2.30	30.0	45-65	2253	2300	2500	873
<b>C</b>	17.0	12.4	400	2.30	30.0	45-65	2374	2300	2500	940
<b>D</b>	16.6	14.6	400	2.30	30.0	45-65	2490	2300	2500	1022

**A****B - V1, V2, V3****C - V1, V2, V3****C - PJ060A JV2****C - PJ060B JV2****D - V1, V2****D - PJ040A JV2**

The outreaches stated are with a boom angle of 20° and are therefore not the maximum.

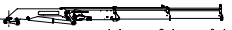


# PK 20002


Performance




	(mt)	(m)	(°)	(mt)	(MPa)	(l/min)	(kg)	(mm)	(mm)	(mm)
<b>A</b>	18.3	8.2	400	2.30	33.0	65-80	2270	2295	2500	890
<b>B</b>	17.8	10.4	400	2.30	33.0	65-80	2439	2295	2500	890
<b>C</b>	17.4	12.6	400	2.30	33.0	65-80	2574	2295	2500	940
<b>D</b>	17.0	14.9	400	2.30	33.0	65-80	2704	2295	2500	1010
<b>E</b>	16.7	17.1	400	2.30	33.0	65-80	2825	2295	2500	1010

**A**


m		<u>4.1</u>	<u>6.1</u>	<u>8.1</u>
kg	max. 6100	4560	3010	2250

**B - V1, V2, V3**



m		<u>4.1</u>	<u>6.1</u>	<u>8.1</u>	<u>10.3</u>	<u>12.5</u>	<u>14.7</u>	<u>16.8</u>
kg	max. 5900	4350	2830	2080	1630	1270	1020	850

**B - PJ060A JV2**



m					<u>13.3</u>	<u>15.1</u>	<u>17.0</u>	<u>18.9</u>	<u>20.9</u>
kg					890	770	680	580	490

**B - PJ060B JV2**


m					<u>13.4</u>	<u>15.2</u>	<u>17.0</u>	<u>18.9</u>	<u>20.9</u>	<u>22.9</u>
kg					830	710	620	560	470	210

**C - V1, V2, V3**



m		<u>4.1</u>	<u>6.1</u>	<u>8.1</u>	<u>10.3</u>	<u>12.5</u>	<u>14.7</u>	<u>16.8</u>	<u>18.8</u>
kg	max. 5800	4180	2690	1950	1500	1230	990	820	620

**C - PJ060A JV2**


m						<u>15.5</u>	<u>17.3</u>	<u>19.1</u>	<u>21.0</u>	<u>23.0</u>
kg						600	530	470	390	320

**C - PJ060B JV2**



m						<u>15.5</u>	<u>17.3</u>	<u>19.2</u>	<u>21.0</u>	<u>23.0</u>	<u>25.0</u>
kg						550	480	420	380	310	210

**D - V1, V2**


m		<u>4.1</u>	<u>6.1</u>	<u>8.1</u>	<u>10.3</u>	<u>12.5</u>	<u>14.7</u>	<u>16.9</u>	<u>18.9</u>
kg	max. 5650	4000	2540	1810	1370	1100	930	760	620

**D - PJ040A JV2**


m							<u>17.7</u>	<u>19.5</u>	<u>21.3</u>	<u>23.3</u>	<u>25.0</u>
kg							500	450	410	290	220

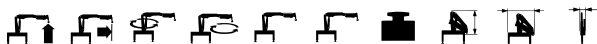
**E - V1**


m		<u>4.1</u>	<u>6.1</u>	<u>8.1</u>	<u>10.3</u>	<u>12.5</u>	<u>14.7</u>	<u>16.9</u>	<u>18.9</u>
kg	max. 5550	3840	2420	1690	1250	980	810	700	590

The outreaches stated are with a boom angle of 20° and are therefore not the maximum.

# PK 21502

## Performance



	(mt)	(m)	(°)	(mt)	(MPa)	(l/min)	(kg)	(mm)	(mm)	(mm)
<b>A</b>	20.1	8.1	400	2.70	30.0	50-75	2489	2300	2500	950
<b>B</b>	19.2	10.2	400	2.70	30.0	50-75	2674	2300	2500	950
<b>C</b>	18.7	12.4	400	2.70	30.0	50-75	2854	2300	2500	1020
<b>D</b>	18.1	14.6	400	2.70	30.0	50-75	3032	2300	2500	1060
<b>E</b>	17.7	16.8	400	2.70	30.0	50-75	3179	2300	2500	1090
<b>F</b>	17.3	19.1	400	2.70	30.0	50-75	3292	2316	2500	1090
<b>G</b>	16.9	21.3	400	2.70	30.0	50-75	3402	2356	2514	1090

**A**

m		<u>4.6</u>	<u>6.0</u>	<u>7.9</u>	
kg	max. 8500	4330	3270	2470	

**B**

m		<u>4.6</u>	<u>6.0</u>	<u>7.9</u>	<u>10.1</u>	
kg	max. 8300	4190	3120	2310	1800	

**C - V1, V2, V3**

m		<u>4.6</u>	<u>6.0</u>	<u>7.9</u>	<u>10.1</u>	<u>12.2</u>	<u>14.4</u>	<u>16.6</u>	<u>18.8</u>	
kg	max. 8050	4070	2980	2160	1640	1330	1050	830	680	

**D - V1, V2, V3**

m		<u>4.6</u>	<u>6.0</u>	<u>7.9</u>	<u>10.1</u>	<u>12.2</u>	<u>14.4</u>	<u>16.7</u>	<u>18.8</u>	<u>21.0</u>	
kg	max. 7850	3950	2850	2020	1480	1170	970	770	620	510	

**D - PJ060A JV2**

m						<u>17.4</u>	<u>19.2</u>	<u>21.1</u>	<u>23.0</u>	<u>25.0</u>
kg						430	380	340	270	220

**D - PJ060B JV2**

m							<u>17.5</u>	<u>19.3</u>	<u>21.1</u>	<u>23.0</u>	<u>25.0</u>	<u>27.0</u>
kg							370	310	280	250	200	160

**E - V1, V2, V3**

m		<u>4.6</u>	<u>6.0</u>	<u>7.9</u>	<u>10.1</u>	<u>12.2</u>	<u>14.4</u>	<u>16.7</u>	<u>18.8</u>	<u>21.0</u>	<u>23.0</u>
kg	max. 6700	3850	2740	1900	1360	1040	840	710	570	470	390

**E - PJ060A JV2**

m							<u>19.6</u>	<u>21.4</u>	<u>23.2</u>	<u>25.2</u>	<u>27.2</u>
kg							220	190	170	120	80

**E - PJ060B JV2**

m								<u>19.7</u>	<u>21.5</u>	<u>23.3</u>	<u>25.2</u>	<u>27.2</u>	<u>29.2</u>
kg								160	130	110	100	60	30

**F - V1, V2**

m		<u>4.6</u>	<u>6.0</u>	<u>7.9</u>	<u>10.1</u>	<u>12.2</u>	<u>14.4</u>	<u>16.7</u>	<u>18.9</u>	<u>21.1</u>	<u>23.1</u>
kg	max. 6600	3780	2660	1810	1260	940	740	610	530	430	360

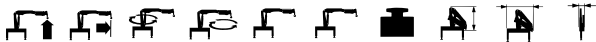
**G - V1**

m		<u>4.6</u>	<u>6.0</u>	<u>7.9</u>	<u>10.1</u>	<u>12.2</u>	<u>14.4</u>	<u>16.7</u>	<u>18.9</u>	<u>21.1</u>	<u>23.1</u>
kg	max. 6500	3720	2590	1730	1170	840	640	510	420	370	300

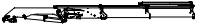
The outreaches stated are with a boom angle of 20° and are therefore not the maximum.

# PK 23002


## Performance




	(mt)	(m)	(°)	(mt)	(MPa)	(l/min)	(kg)	(mm)	(mm)	(mm)
<b>A</b>	22.3	8.1	400	2.70	33.0	75-100	2489	2300	2500	950
<b>B</b>	21.4	10.2	400	2.70	33.0	75-100	2674	2300	2500	950
<b>C</b>	20.9	12.4	400	2.70	33.0	75-100	2854	2300	2500	1020
<b>D</b>	20.4	14.6	400	2.70	33.0	75-100	3032	2300	2500	1060
<b>E</b>	19.9	16.8	400	2.70	33.0	75-100	3179	2300	2500	1090
<b>F</b>	19.5	19.1	400	2.70	33.0	75-100	3292	2316	2500	1090
<b>G</b>	19.2	21.3	400	2.70	33.0	75-100	3402	2356	2514	1090

**A**


m		<u>4.6</u>	<u>6.0</u>	<u>7.9</u>
kg	max. 8500	4810	3640	2760

**B**


m		<u>4.6</u>	<u>6.0</u>	<u>7.9</u>	<u>10.1</u>
kg	max. 8300	4680	3500	2600	2020

**C - V1, V2, V3**



m		<u>4.6</u>	<u>6.0</u>	<u>7.9</u>	<u>10.1</u>	<u>12.2</u>	<u>14.4</u>	<u>16.6</u>	<u>18.8</u>
kg	max. 8050	4560	3360	2450	1870	1520	1210	970	800

**C - PJ080B**


m		<u>15.3</u>	<u>16.9</u>	<u>18.6</u>	<u>20.3</u>
kg		600	510	440	400

**C - PJ080C JV2**


m		<u>15.4</u>	<u>17.0</u>	<u>18.7</u>	<u>20.4</u>	<u>22.1</u>	<u>24.1</u>	<u>26.1</u>
kg		500	420	350	310	280	220	190

**D - V1, V2, V3**



m		<u>4.6</u>	<u>6.0</u>	<u>7.9</u>	<u>10.1</u>	<u>12.2</u>	<u>14.4</u>	<u>16.7</u>	<u>18.8</u>	<u>21.0</u>
kg	max. 7850	4430	3230	2310	1710	1360	1130	910	740	620

**D - PJ060A JV2**



m		<u>17.4</u>	<u>19.2</u>	<u>21.1</u>	<u>23.0</u>	<u>25.0</u>
kg		560	500	450	370	310

**D - PJ060B JV2**



m		<u>17.5</u>	<u>19.3</u>	<u>21.1</u>	<u>23.0</u>	<u>25.0</u>	<u>27.0</u>
kg		500	430	390	350	290	210

**E - V1, V2, V3**



m		<u>4.6</u>	<u>6.0</u>	<u>7.9</u>	<u>10.1</u>	<u>12.2</u>	<u>14.4</u>	<u>16.7</u>	<u>18.8</u>	<u>21.0</u>	<u>23.0</u>
kg	max. 6700	4340	3120	2190	1580	1220	1000	850	690	580	490

**E - PJ060A JV2**


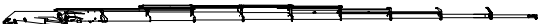
m		<u>19.6</u>	<u>21.4</u>	<u>23.2</u>	<u>25.2</u>	<u>27.2</u>
kg		340	300	270	210	160

**E - PJ060B JV2**


m		<u>19.7</u>	<u>21.5</u>	<u>23.3</u>	<u>25.2</u>	<u>27.2</u>	<u>29.2</u>
kg		280	240	210	190	150	110

**F - V1, V2**


m		<u>4.6</u>	<u>6.0</u>	<u>7.9</u>	<u>10.1</u>	<u>12.2</u>	<u>14.4</u>	<u>16.7</u>	<u>18.9</u>	<u>21.1</u>	<u>23.1</u>
kg	max. 6600	4270	3040	2100	1490	1130	900	750	650	540	460

**G - V1**


m		<u>4.6</u>	<u>6.0</u>	<u>7.9</u>	<u>10.1</u>	<u>12.2</u>	<u>14.4</u>	<u>16.7</u>	<u>18.9</u>	<u>21.1</u>	<u>23.1</u>
kg	max. 6500	4200	2960	2010	1400	1030	800	650	550	480	410


The outreaches stated are with a boom angle of 20° and are therefore not the maximum.

# PK 23500


Performance




	(mt)	(m)	(°)	(mt)	(MPa)	(l/min)	(kg)	(mm)	(mm)	(mm)
<b>A</b>	22.4	8.2	400	2.80	30.0	50-75	2346	2300	2500	875
<b>B</b>	21.9	10.3	400	2.80	30.0	50-75	2506	2300	2500	875
<b>C</b>	21.5	12.4	400	2.80	30.0	50-75	2646	2300	2500	935
<b>D</b>	21.0	14.5	400	2.80	30.0	50-75	2782	2300	2500	975
<b>E</b>	20.7	16.7	400	2.80	30.0	50-75	2895	2300	2520	995

**A**



m		<u>4.6</u>	<u>6.1</u>	<u>8.0</u>
kg	max. 5100	4900	3600	2730

**B - V1, V2, V3**


m		<u>4.6</u>	<u>6.1</u>	<u>8.0</u>	<u>10.1</u>	<u>12.4</u>	<u>14.6</u>	<u>16.8</u>
kg	max. 6000	4780	3470	2600	2040	1600	1310	1000

**C - V1, V2, V3**



m		<u>4.6</u>	<u>6.1</u>	<u>8.0</u>	<u>10.1</u>	<u>12.3</u>	<u>14.5</u>	<u>16.7</u>	<u>18.7</u>
kg	max. 5850	4680	3360	2480	1920	1570	1280	1000	620

**C - PJ060A JV2**


m						<u>15.4</u>	<u>17.2</u>	<u>19.0</u>	<u>21.0</u>	<u>23.0</u>
kg						880	770	550	390	280

**C - PJ060B JV2**



m						<u>15.5</u>	<u>17.3</u>	<u>19.1</u>	<u>21.0</u>	<u>23.0</u>	<u>25.0</u>
kg						820	710	490	370	270	200

**D - V1, V2**


m		<u>4.6</u>	<u>6.1</u>	<u>8.0</u>	<u>10.1</u>	<u>12.3</u>	<u>14.4</u>	<u>16.6</u>	<u>18.6</u>
kg	max. 5750	4590	3260	2370	1800	1450	1210	1000	620

**D - PJ040A JV2**


m							<u>17.5</u>	<u>19.2</u>	<u>21.1</u>	<u>23.1</u>	<u>24.7</u>
kg							650	340	230	150	110

**E - V1**


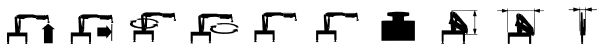
m		<u>4.6</u>	<u>6.1</u>	<u>8.0</u>	<u>10.1</u>	<u>12.3</u>	<u>14.4</u>	<u>16.5</u>	<u>18.5</u>
kg	max. 5600	4520	3180	2280	1700	1340	1110	960	620

The outreaches stated are with a boom angle of 20° and are therefore not the maximum.




# PK 24502


## Performance




	(mt)	(m)	(°)	(mt)	(MPa)	(l/min)	(kg)	(mm)	(mm)	(mm)
<b>A</b>	23.3	8.1	400	2.80	28.5	55-80	2802	2300	2500	960
<b>B</b>	22.7	10.2	400	2.80	28.5	55-80	3005	2300	2500	960
<b>C</b>	22.1	12.4	400	2.80	28.5	55-80	3220	2300	2500	1030
<b>D</b>	21.5	14.6	400	2.80	28.5	55-80	3398	2300	2500	1070
<b>E</b>	21.1	16.8	400	2.80	28.5	55-80	3545	2300	2500	1100
<b>F</b>	20.7	19.0	400	2.80	28.5	55-80	3670	2316	2500	1100
<b>G</b>	20.1	21.3	400	2.80	28.5	55-80	3780	2356	2500	1100

**A**


m		<u>4.6</u>	<u>6.0</u>	<u>7.9</u>
kg	max. 8500	5110	3860	2920

**B**



m		<u>4.6</u>	<u>6.0</u>	<u>7.9</u>	<u>10.1</u>
kg	max. 8300	4960	3700	2750	2130

**C - V1, V2, V3**



m		<u>4.6</u>	<u>6.0</u>	<u>7.9</u>	<u>10.1</u>	<u>12.2</u>	<u>14.4</u>	<u>16.6</u>	<u>18.8</u>
kg	max. 8050	4810	3540	2570	1950	1580	1260	1020	840

**D - V1, V2, V3**



m		<u>4.6</u>	<u>6.0</u>	<u>7.9</u>	<u>10.1</u>	<u>12.2</u>	<u>14.4</u>	<u>16.7</u>	<u>18.8</u>	<u>21.0</u>
kg	max. 7850	4960	3400	2420	1790	1420	1180	950	780	660

**E - V1, V2, V3**


m		<u>4.6</u>	<u>6.0</u>	<u>7.9</u>	<u>10.1</u>	<u>12.2</u>	<u>14.4</u>	<u>16.7</u>	<u>18.8</u>	<u>21.0</u>	<u>23.0</u>
kg	max. 6700	4590	3300	2310	1660	1280	1050	900	730	610	530

**F - V1, V2**


m		<u>4.6</u>	<u>6.0</u>	<u>7.9</u>	<u>10.1</u>	<u>12.2</u>	<u>14.4</u>	<u>16.7</u>	<u>18.9</u>	<u>21.1</u>	<u>23.1</u>
kg	max. 6600	4520	3210	2110	1560	1170	940	780	680	560	480

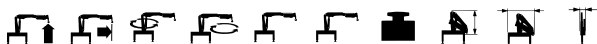
**G - V1**


m		<u>4.6</u>	<u>6.0</u>	<u>7.9</u>	<u>10.1</u>	<u>12.2</u>	<u>14.4</u>	<u>16.7</u>	<u>18.9</u>	<u>21.1</u>	<u>23.1</u>
kg	max. 6500	4450	3130	2120	1470	1080	840	680	570	510	430

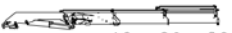
The outreaches stated are with a boom angle of 20° and are therefore not the maximum.

# PK 26502


## Performance




	(mt)	(m)	(°)	(mt)	(MPa)	(l/min)	(kg)	(mm)	(mm)	(mm)
<b>A</b>	24.7	8.1	∞	3.30	30.0	55-80	2847	2300	2500	960
<b>B</b>	24.1	10.2	∞	3.30	30.0	55-80	3050	2300	2500	960
<b>C</b>	23.5	12.4	∞	3.30	30.0	55-80	3265	2300	2500	1030
<b>D</b>	22.9	14.6	∞	3.30	30.0	55-80	3443	2300	2500	1070
<b>E</b>	22.5	16.8	∞	3.30	30.0	55-80	3590	2300	2500	1100
<b>F</b>	22.1	19.0	∞	3.30	30.0	55-80	3715	2316	2500	1100
<b>G</b>	21.7	21.3	∞	3.30	30.0	55-80	3825	2356	2500	1100

**A**



m		<u>4.6</u>	<u>6.0</u>	<u>7.9</u>
kg	max. 8500	5410	4090	3100

**B**


m		<u>4.6</u>	<u>6.0</u>	<u>7.9</u>	<u>10.1</u>
kg	max. 8300	5260	3930	2930	2270

**C - V1, V2, V3**



m		<u>4.6</u>	<u>6.0</u>	<u>7.9</u>	<u>10.1</u>	<u>12.2</u>	<u>14.4</u>	<u>16.6</u>	<u>18.8</u>
kg	max. 8050	5110	3770	2750	2090	1690	1360	1100	920

**D - V1, V2, V3**


m		<u>4.6</u>	<u>6.0</u>	<u>7.9</u>	<u>10.1</u>	<u>12.2</u>	<u>14.4</u>	<u>16.7</u>	<u>18.8</u>	<u>21.0</u>
kg	max. 7850	4990	3630	2600	1930	1530	1280	1040	860	720

**E - V1, V2, V3**


m		<u>4.6</u>	<u>6.0</u>	<u>7.9</u>	<u>10.1</u>	<u>12.2</u>	<u>14.4</u>	<u>16.7</u>	<u>18.8</u>	<u>21.0</u>	<u>23.0</u>
kg	max. 6700	4900	3530	2480	1810	1400	1150	980	800	680	570

**F - V1, V2**


m		<u>4.6</u>	<u>6.0</u>	<u>7.9</u>	<u>10.1</u>	<u>12.2</u>	<u>14.4</u>	<u>16.7</u>	<u>18.9</u>	<u>21.1</u>	<u>23.1</u>
kg	max. 6600	4820	3440	2390	1700	1290	1040	870	750	630	540

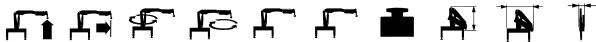
**G - V1**


m		<u>4.6</u>	<u>6.0</u>	<u>7.9</u>	<u>10.1</u>	<u>12.2</u>	<u>14.4</u>	<u>16.7</u>	<u>18.9</u>	<u>21.1</u>	<u>23.1</u>
kg	max. 6500	4760	3370	2300	1610	1200	940	770	650	570	490

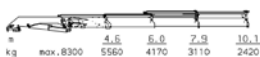
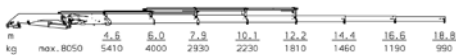
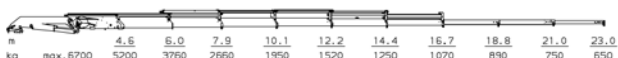
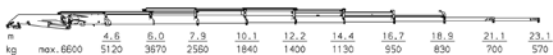
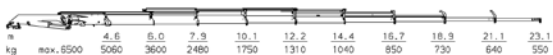
The outreaches stated are with a boom angle of 20° and are therefore not the maximum.

# PK 27002

## Performance



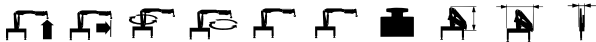
	(mt)	(m)	(°)	(mt)	(MPa)	(l/min)	(kg)	(mm)	(mm)	(mm)
<b>A</b>	26.0	8.1	400	2.80	31.5	80-100	2802	2300	2500	960
<b>B</b>	25.4	10.2	400	2.80	31.5	80-100	3005	2300	2500	960
<b>C</b>	24.8	12.4	400	2.80	31.5	80-100	3220	2300	2500	1030
<b>D</b>	24.3	14.6	400	2.80	31.5	80-100	3398	2300	2500	1070
<b>E</b>	23.8	16.8	400	2.80	31.5	80-100	3545	2300	2500	1100
<b>F</b>	23.4	19.0	400	2.80	31.5	80-100	3670	2316	2500	1100
<b>G</b>	23.1	21.3	400	2.80	31.5	80-100	3780	2356	2500	1100

**A****B****C - V1, V2, V3****C - PJ080B****C - PJ080C JV2****D - V1, V2, V3****D - PJ060A JV2****D - PJ060B JV2****E - V1, V2, V3****E - PJ060A JV2****E - PJ060B JV2****F - V1, V2****G - V1**

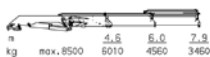
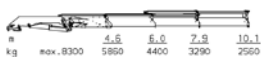
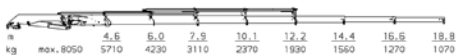
The outreaches stated are with a boom angle of 20° and are therefore not the maximum.

# PK 29002

## Performance



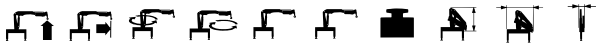
	(mt)	(m)	(°)	(mt)	(MPa)	(l/min)	(kg)	(mm)	(mm)	(mm)
<b>A</b>	27.4	8.1	∞	3.30	33.0	80-100	2847	2300	2500	960
<b>B</b>	26.8	10.2	∞	3.30	33.0	80-100	3050	2300	2500	960
<b>C</b>	26.2	12.4	∞	3.30	33.0	80-100	3265	2300	2500	1030
<b>D</b>	25.7	14.6	∞	3.30	33.0	80-100	3443	2300	2500	1070
<b>E</b>	25.2	16.8	∞	3.30	33.0	80-100	3590	2300	2500	1100
<b>F</b>	24.8	19.0	∞	3.30	33.0	80-100	3715	2316	2500	1100
<b>G</b>	24.4	21.3	∞	3.30	33.0	80-100	3825	2356	2500	1100

**A****B****C - V1, V2, V3****C - PJ080B****C - PJ080C JV2****D - V1, V2, V3****D - PJ060A JV2****D - PJ060B JV2****E - V1, V2, V3****E - PJ060A JV2****E - PJ060B JV2****F - V1, V2****G - V1**

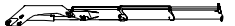
The outreaches stated are with a boom angle of 20° and are therefore not the maximum.



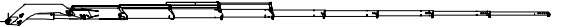
# PK 32080



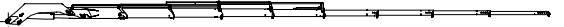
	(mt)	(m)	(°)	(mt)	(MPa)	(l/min)	(kg)	(mm)	(mm)	(mm)
<b>A</b>	30.2	8.1	400	3.80	30.0	55-80	3130	2320	2479	972
<b>B</b>	29.6	10.1	400	3.80	30.0	55-80	3360	2320	2479	972
<b>C</b>	29.0	12.2	400	3.80	30.0	55-80	3510	2320	2479	972
<b>D</b>	28.5	14.3	400	3.80	30.0	55-80	3650	2320	2479	972

**A**



m		<u>4.2</u>	<u>6.0</u>	<u>7.9</u>
kg	max. 8500	7200	5010	3840

**B - V1, V2, V3, V4, V5**


m		<u>4.3</u>	<u>6.1</u>	<u>8.0</u>	<u>9.9</u>	<u>11.9</u>	<u>14.0</u>	<u>16.2</u>	<u>18.4</u>	<u>20.8</u>
kg	max. 8300	6920	4780	3630	2900	2340	1920	1300	900	600

**C - V1, V2, V3, V4**


m		<u>4.4</u>	<u>6.2</u>	<u>8.0</u>	<u>10.0</u>	<u>11.9</u>	<u>14.0</u>	<u>16.2</u>	<u>18.4</u>	<u>20.8</u>
kg	max. 8100	6600	4570	3430	2710	2260	1760	1300	900	600

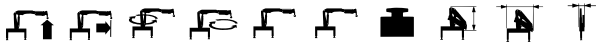
**D - V1, V2, V3**


m		<u>4.4</u>	<u>6.3</u>	<u>8.1</u>	<u>10.1</u>	<u>12.0</u>	<u>14.0</u>	<u>16.1</u>	<u>18.4</u>	<u>20.7</u>
kg	max. 6700	6420	4380	3260	2550	2100	1790	1300	900	600


The outreaches stated are with a boom angle of 20° and are therefore not the maximum.

# PK 32002


## Performance




	(mt)	(m)	(°)	(mt)	(MPa)	(l/min)	(kg)	(mm)	(mm)	(mm)
<b>A</b>	30.3	7.7	∞	4.00	30.0	80-100	3575	2400	2530	1620
<b>B</b>	29.5	9.6	∞	4.00	30.0	80-100	3825	2400	2530	1620
<b>C</b>	28.8	11.6	∞	4.00	30.0	80-100	4070	2400	2530	1620
<b>D</b>	28.1	13.8	∞	4.00	30.0	80-100	4300	2400	2530	1620
<b>E</b>	27.4	16.0	∞	4.00	30.0	80-100	4525	2400	2530	1620
<b>F</b>	26.7	18.3	∞	4.00	30.0	80-100	4750	2416	2530	1750
<b>G</b>	26.2	20.6	∞	4.00	30.0	80-100	4905	2458	2530	1760

**A**


m	4.5	5.7	7.5	
kg	max. 10580	6740	5310	4050

**B**


m	4.5	5.7	7.5	9.5	
kg	max. 10340	6540	5110	3840	3030

**C**



m	4.5	5.7	7.5	9.5	11.5	
kg	max. 9950	6360	4920	3640	2810	2310

**C - PJ125C**


m	14.9	16.3	17.8	19.3	20.8
kg	850	740	650	580	530

**E - PJ125E JV1**



m	15.1	16.5	17.9	19.4	21.0	22.7	24.5	26.3
kg	640	530	450	380	330	290	260	220

**D**



m	4.5	5.7	7.5	9.5	11.5	13.7	
kg	max. 9430	6220	4760	3460	2620	2100	1750

**D - PJ080B**



m	16.9	18.5	20.1	21.8
kg	800	710	640	580

**D - PJ080C JV2**



m	17.0	18.5	20.2	21.9	23.7	25.7	27.7
kg	710	620	540	490	450	380	330

**E - V1, V2**



m	4.5	5.7	7.5	9.5	11.5	13.7	15.9	18.1	20.3	
kg	max. 9000	6080	4600	3280	2430	1900	1540	1310	1070	900

**E - PJ060A JV2**


m	19.0	20.8	22.7	24.6	26.7
kg	720	650	590	510	430

**E - PJ060B JV2**



m	19.1	20.9	22.8	24.6	26.6	28.6
kg	660	580	530	490	420	210

**F**



m	4.5	5.7	7.5	9.5	11.5	13.7	15.9	18.2	
kg	max. 8610	5930	4450	3110	2240	1710	1340	1100	940

**F - PJ060A JV2**


m	21.3	23.1	24.9	26.8	28.8
kg	450	400	370	300	250

**F - PJ060B JV2**


m	21.3	23.1	25.0	26.8	28.8	30.8
kg	380	340	300	280	230	190

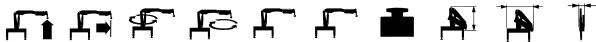
**G - V1, V2**


m	4.5	5.7	7.5	9.5	11.5	13.7	15.9	18.2	20.5	22.6	24.6	
kg	max. 8290	5780	4350	2980	2110	1580	1200	960	800	700	580	500

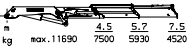
The outreaches stated are with a boom angle of 20° and are therefore not the maximum.

# PK 36002

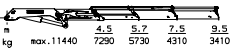
## Performance



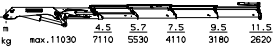
	(mt)	(m)	(°)	(mt)	(MPa)	(l/min)	(kg)	(mm)	(mm)	(mm)
<b>A</b>	33.6	7.7	∞	4.00	33.0	80-100	3495	2400	2530	1290
<b>B</b>	32.9	9.6	∞	4.00	33.0	80-100	3745	2400	2530	1290
<b>C</b>	32.1	11.6	∞	4.00	33.0	80-100	3990	2400	2530	1290
<b>D</b>	31.5	13.8	∞	4.00	33.0	80-100	4220	2400	2530	1290
<b>E</b>	30.8	16.0	∞	4.00	33.0	80-100	4445	2400	2530	1290
<b>F</b>	30.1	18.3	∞	4.00	33.0	80-100	4670	2416	2530	1425
<b>G</b>	29.6	20.6	∞	4.00	33.0	80-100	4825	2458	2530	1430

**A**


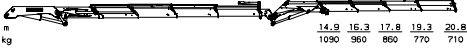
m	4.5	5.7	7.5	
kg	max. 11690	7500	5930	4520

**B**


m	4.5	5.7	7.5	9.5	
kg	max. 11440	7290	5730	4310	3410

**C**


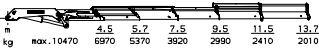
m	4.5	5.7	7.5	9.5	11.5	
kg	max. 11030	7110	5530	4110	3160	2620

**C - PJ125C**



m	14.9	16.3	17.8	19.3	20.8
kg	1090	960	860	770	710

**C - PJ125E JV1**

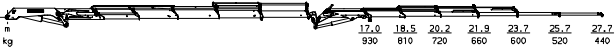

m	15.1	16.5	17.9	19.4	21.0	22.7	24.5	26.3
kg	880	760	650	570	500	450	410	360

**D**


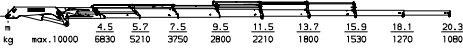
m	4.5	5.7	7.5	9.5	11.5	13.7	
kg	max. 10470	6970	5370	3920	2990	2410	2010

**D - PJ080B**


m	16.9	18.5	20.1	21.8
kg	1020	910	820	750

**D - PJ080C JV2**


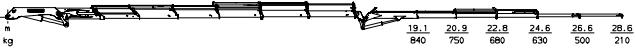
m	17.0	18.5	20.2	21.9	23.7	25.7	27.7
kg	930	810	720	660	600	520	440

**E - V1, V2**


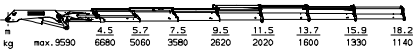
m	4.5	5.7	7.5	9.5	11.5	13.7	15.9	18.1	20.3	
kg	max. 10000	6830	5210	3750	2800	2210	1800	1530	1270	1080

**E - PJ060A JV2**


m	19.0	20.8	22.7	24.6	26.7
kg	910	820	750	650	520

**E - PJ060B JV2**


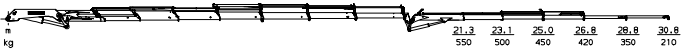
m	19.1	20.9	22.8	24.6	26.6	28.6
kg	840	750	680	630	500	210

**F**


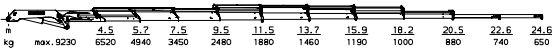
m	4.5	5.7	7.5	9.5	11.5	13.7	15.9	18.2	
kg	max. 9590	6680	5060	3580	2620	2020	1600	1330	1140

**F - PJ060A JV2**


m	21.3	23.1	24.9	26.8	28.8
kg	620	560	510	440	360

**F - PJ060B JV2**


m	21.3	23.1	25.0	26.8	28.8	30.8
kg	550	500	450	420	350	210

**G - V1, V2**


m	4.5	5.7	7.5	9.5	11.5	13.7	15.9	18.2	20.5	22.6	24.6	
kg	max. 9230	6520	4940	3450	2480	1880	1460	1190	1000	880	740	650


The outreaches stated are with a boom angle of 20° and are therefore not the maximum.

# PK 38502


Performance




	(mt)	(m)	(°)	(mt)	(MPa)	(l/min)	(kg)	(mm)	(mm)	(mm)
<b>A</b>	37.0	8.0	400	5.00	30.0	55-80	3970	2345	2500	1210
<b>B</b>	36.2	10.0	400	5.00	30.0	55-80	4205	2345	2500	1210
<b>C</b>	35.4	12.1	400	5.00	30.0	55-80	4450	2345	2500	1220
<b>D</b>	34.8	14.5	400	5.00	30.0	55-80	4680	2345	2500	1240
<b>E</b>	34.2	16.8	400	5.00	30.0	55-80	4900	2350	2500	1240

**A**



m		<u>4.4</u>	<u>5.9</u>	<u>7.8</u>
kg	max. 13000	8390	6270	4760

**B**



m		<u>4.4</u>	<u>5.9</u>	<u>7.8</u>	<u>9.9</u>
kg	max. 12700	8220	6090	4570	3610

**C**


m		<u>4.4</u>	<u>5.9</u>	<u>7.8</u>	<u>9.9</u>	<u>12.0</u>
kg	max. 12500	8040	5890	4360	3380	2780

**D**


m		<u>4.4</u>	<u>5.9</u>	<u>7.8</u>	<u>9.9</u>	<u>12.0</u>	<u>14.3</u>
kg	max. 11870	7900	5730	4180	3180	2570	2140

**E - V1, V2**


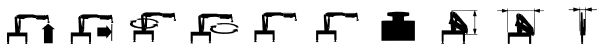
m		<u>4.4</u>	<u>5.9</u>	<u>7.8</u>	<u>9.9</u>	<u>12.0</u>	<u>14.3</u>	<u>16.6</u>	<u>18.0</u>	<u>21.0</u>
kg	max. 11340	7810	5570	4000	3000	2380	1940	1650	1370	1100

The outreaches stated are with a boom angle of 20° and are therefore not the maximum.

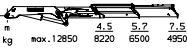
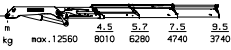
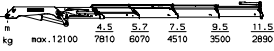
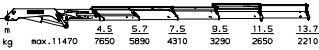
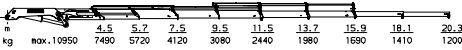
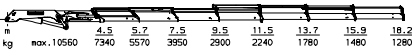
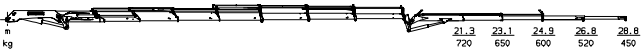
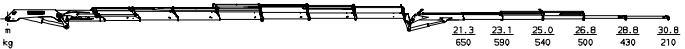
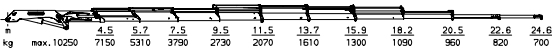


# PK 40002

## Performance



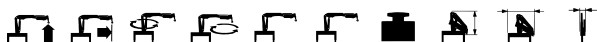
	(mt)	(m)	(°)	(mt)	(MPa)	(l/min)	(kg)	(mm)	(mm)	(mm)
<b>A</b>	37.0	7.7	∞	4.50	30.0	80-100	4230	2400	2512	1620
<b>B</b>	36.0	9.6	∞	4.50	30.0	80-100	4500	2400	2512	1620
<b>C</b>	35.2	11.6	∞	4.50	30.0	80-100	4765	2400	2512	1620
<b>D</b>	34.5	13.8	∞	4.50	30.0	80-100	5015	2400	2512	1620
<b>E</b>	33.8	16.0	∞	4.50	30.0	80-100	5260	2400	2512	1620
<b>F</b>	33.1	18.3	∞	4.50	30.0	80-100	5485	2416	2512	1750
<b>G</b>	32.5	20.6	∞	4.50	30.0	80-100	5680	2458	2512	1760

**A****B****C****D****D - PJ125C****D - PJ125E JV1****E - V1, V2****E - J080B****E - J080C JV2****F****F - PJ060A JV2****F - PJ060B JV2****G - V1, V2**


The outraches stated are with a boom angle of 20° and are therefore not the maximum.

# PK 42502


Performance




	(mt)	(m)	(°)	(mt)	(MPa)	(l/min)	(kg)	(mm)	(mm)	(mm)
<b>A</b>	41.1	8.0	400	5.00	33.0	80-100	3970	2345	2500	1210
<b>B</b>	40.2	10.0	400	5.00	33.0	80-100	4205	2345	2500	1210
<b>C</b>	39.5	12.1	400	5.00	33.0	80-100	4450	2345	2500	1220
<b>D</b>	38.8	14.5	400	5.00	33.0	80-100	4680	2345	2500	1240
<b>E</b>	38.2	16.8	400	5.00	33.0	80-100	4900	2350	2500	1240

**A**



m		<u>4.4</u>	<u>5.9</u>	<u>7.8</u>
kg	max. 14340	9310	6970	5300

**B**



m		<u>4.4</u>	<u>5.9</u>	<u>7.8</u>	<u>9.9</u>
kg	max. 14000	9140	6790	5110	4040

**C**


m		<u>4.4</u>	<u>5.9</u>	<u>7.8</u>	<u>9.9</u>	<u>12.0</u>
kg	max. 13820	8960	6590	4900	3810	3140

**D**


m		<u>4.4</u>	<u>5.9</u>	<u>7.8</u>	<u>9.9</u>	<u>12.0</u>	<u>14.3</u>
kg	max. 13140	8820	6430	4650	3610	2930	2440

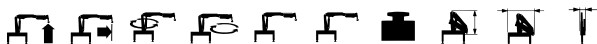
**E - V1, V2**


m		<u>4.4</u>	<u>5.9</u>	<u>7.8</u>	<u>9.9</u>	<u>12.0</u>	<u>14.3</u>	<u>16.6</u>	<u>19.0</u>	<u>21.2</u>
kg	max. 12570	8700	6280	4550	3430	2730	2240	1910	1500	1100

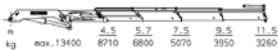
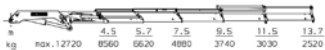
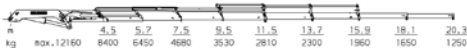
The outreaches stated are with a boom angle of 20° and are therefore not the maximum.

# PK 44002

## Performance



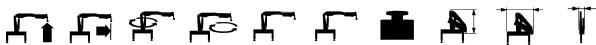
	(mt)	(m)	(°)	(mt)	(MPa)	(l/min)	(kg)	(mm)	(mm)	(mm)
<b>A</b>	41.2	7.7	∞	4.50	33.0	80-100	4150	2400	2512	1290
<b>B</b>	40.1	9.6	∞	4.50	33.0	80-100	4420	2400	2512	1290
<b>C</b>	39.3	11.6	∞	4.50	33.0	80-100	4685	2400	2512	1290
<b>D</b>	38.6	13.8	∞	4.50	33.0	80-100	4935	2400	2512	1290
<b>E</b>	37.9	16.0	∞	4.50	33.0	80-100	5180	2400	2512	1290
<b>F</b>	37.2	18.3	∞	4.50	33.0	80-100	5405	2416	2512	1425
<b>G</b>	36.6	20.6	∞	4.50	33.0	80-100	5600	2458	2512	1430

**A****B****C****D****D - PJ125C****D - PJ125E JV1****E - V1, V2****E - J080B****E - J080C JV2****F****F - PJ060A JV2****F - PJ060B JV2****G - V1, V2**

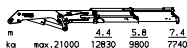
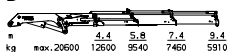
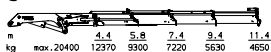
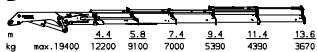
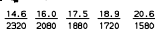
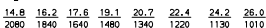
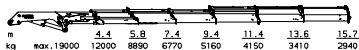
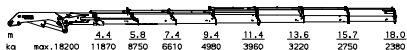
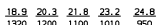
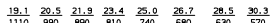
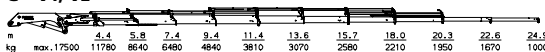
The outreaches stated are with a boom angle of 20° and are therefore not the maximum.

# PK 60002

## Performance



	(mt)	(m)	(°)	(mt)	(MPa)	(l/min)	(kg)	(mm)	(mm)	(mm)
<b>A</b>	58.3	7.6	∞	4.5/7.0	35.0	80-100	4956	2440	2550	1510
<b>B</b>	57.3	9.5	∞	4.5/7.0	35.0	80-100	5276	2440	2550	1510
<b>C</b>	55.3	11.5	∞	4.5/7.0	35.0	80-100	5567	2440	2550	1510
<b>D</b>	54.4	13.7	∞	7.0	35.0	80-100	5949	2440	2550	1515
<b>E</b>	53.7	15.8	∞	7.0	35.0	80-100	6222	2440	2550	1635
<b>F</b>	52.9	18.1	∞	7.0	35.0	80-100	6435	2440	2550	1645
<b>G</b>	51.8	20.4	∞	7.0	35.0	80-100	6615	2440	2550	1645

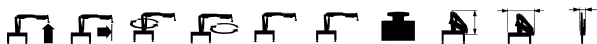
**A****B****C****D****D - PJ170C****DPS****D - PJ170E JV1****DPS****E****E - PJ125C****E - PJ125E JV1****F****F - PJ125C****DPS****F - PJ125E JV1****DPS****G - V1, V2**

The outreaches stated are with a boom angle of 20° and are therefore not the maximum.




# PK 74002


## Performance




	(mt)	(m)	(°)	(mt)	(MPa)	(l/min)	(kg)	(mm)	(mm)	(mm)
<b>A</b>	69.2	7.7	∞	4.5/7.0	35.0	80-100	5755	2450	2550	1510
<b>B</b>	67.4	9.5	∞	4.5/7.0	35.0	80-100	6093	2450	2550	1510
<b>C</b>	65.9	11.5	∞	4.5/7.0	35.0	80-100	6401	2450	2550	1510
<b>D</b>	65.2	13.7	∞	7.0	35.0	80-100	6798	2450	2550	1515
<b>E</b>	64.4	15.8	∞	7.0	35.0	80-100	7091	2450	2550	1615
<b>F</b>	63.7	18.1	∞	7.0	35.0	80-100	7314	2450	2550	1645
<b>G</b>	63.2	20.4	∞	7.0	35.0	80-100	7514	2450	2550	1645

**A**



m	4.4	5.8	7.4	
kg	max. 23000	15470	11840	9310

**B**


m	4.4	5.8	7.4	9.4	
kg	max. 23000	15220	11570	9070	7190

**C**


m	4.4	5.8	7.4	9.4	11.4	
kg	max. 23000	14990	11320	8810	6900	5700

**D**



m	4.4	5.8	7.4	9.4	11.4	13.6	
kg	max. 22000	14800	11100	8580	6640	5420	4540

**D - PJ170C**


m	16.7	18.1	19.6	21.0	22.6
kg	2560	2330	2130	1970	1820

**D - PJ170E JV1**



m	16.9	18.3	19.7	21.2	22.8	24.5	26.3	28.1
kg	2320	2090	1890	1730	1590	1380	1170	980

**E**



m	4.4	5.8	7.4	9.4	11.4	13.6	15.7	
kg	max. 21500	14620	10900	8350	6400	5170	4270	3660

**E - PJ170C**

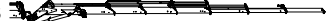

m	18.9	20.2	21.7	23.2	24.8
kg	1920	1750	1610	1500	1400

**DPS**


m	16.8	18.2	19.6	21.1	22.7
kg	2330	2120	1940	1790	1660

**E - PJ170E JV1**



m	19.0	20.4	21.9	23.4	24.9	26.7	28.4	30.2
kg	1680	1520	1380	1260	1160	1070	900	750

**DPS**



m	17.0	18.3	19.8	21.3	22.9	24.6	26.3	28.2
kg	2090	1880	1700	1550	1420	1310	1210	1010

**E - PJ125C**



m	18.9	20.2	21.7	23.2	24.8
kg	2100	1920	1170	1650	1330

**E - PJ125E JV1**



m	19.0	20.4	21.9	23.4	24.9	26.7	28.4	30.2
kg	1870	1700	1560	1430	1120	900	760	640

**F**


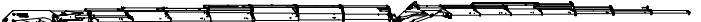
m	4.4	5.8	7.4	9.4	11.4	13.6	15.7	18.0	
kg	max. 21000	14470	10730	8170	6210	4970	4060	3470	3020

**F - PJ125C**



m	21.1	22.4	23.9	25.4	27.0
kg	1600	1470	1360	1270	1200

**DPS**


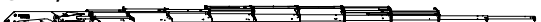
m	18.8	20.3	21.8	23.2	24.8
kg	1910	1750	1610	1500	1330

**F - PJ125E JV1**


m	21.2	22.6	24.1	25.6	27.1	28.9	30.6	32.4
kg	1380	1260	1150	1060	980	820	690	570

**DPS**


m	19.1	20.5	21.9	23.4	25.0	26.7	28.5	30.3
kg	1700	1540	1400	1290	1120	900	760	640

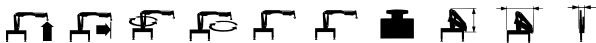
**G - V1, V2**


m	4.4	5.8	7.4	9.4	11.4	13.6	15.7	18.0	20.3	22.6	24.9	
kg	max. 20500	14360	10600	8020	6050	4800	3890	3290	2830	2500	1900	1000

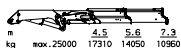
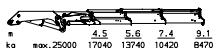
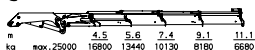
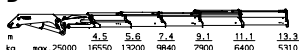
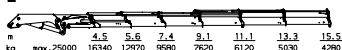
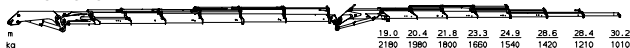
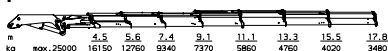
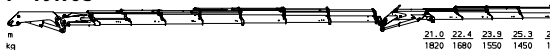
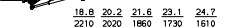
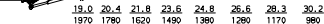
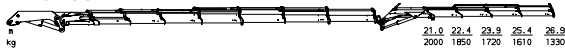
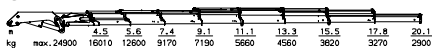
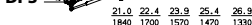
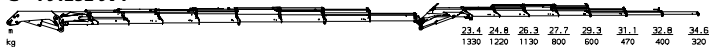
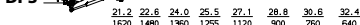
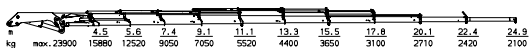
The outreaches stated are with a boom angle of 20° and are therefore not the maximum.

# PK 85002

## Performance



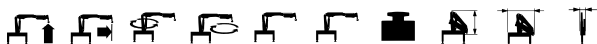
	(mt)	(m)	(°)	(mt)	(MPa)	(l/min)	(kg)	(mm)	(mm)	(mm)
<b>A</b>	77.6	7.4	∞	7.70	36.5	90-110	6589	2450	2550	1600
<b>B</b>	76.5	9.3	∞	7.70	36.5	90-110	6952	2450	2550	1600
<b>C</b>	75.5	11.3	∞	7.70	36.5	90-110	7317	2450	2550	1690
<b>D</b>	74.6	13.5	∞	7.70	36.5	90-110	7661	2450	2550	1690
<b>E</b>	73.7	15.7	∞	7.70	36.5	90-110	7992	2450	2550	1800
<b>F</b>	72.9	18.0	∞	7.70	36.5	90-110	8291	2450	2550	1800
<b>G</b>	72.2	20.2	∞	7.70	36.5	90-110	8515	2450	2550	1800
<b>H</b>	71.7	25.5	∞	7.70	36.5	90-110	8703	2450	2550	1800

**A****B****C****D****E****E - PJ170C****E - PJ170E JV1****F****F - PJ170C****DPS****F - PJ170E JV1****DPS****F - PJ125C****F - PJ125E JV1****G****G - PJ125C****DPS****G - PJ125E JV1****DPS****H - V1**

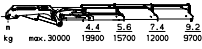
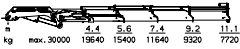
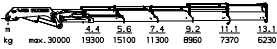
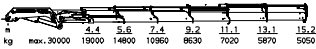
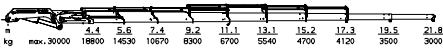
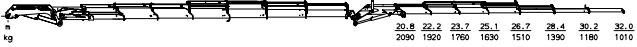
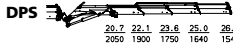
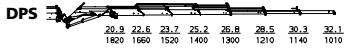
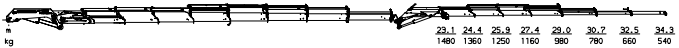
The outreaches stated are with a boom angle of 20° and are therefore not the maximum.

# PK 100002

## Performance



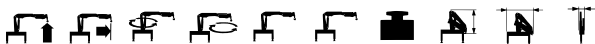
	(mt)	(m)	(°)	(mt)	(MPa)	(l/min)	(kg)	(mm)	(mm)	(mm)
<b>B</b>	88.3	9.3	∞	9.00	36.5	90-110	8800	2595	2550	2305
<b>C</b>	86.4	11.3	∞	9.00	36.5	90-110	9205	2595	2550	2305
<b>D</b>	84.9	13.3	∞	9.00	36.5	90-110	9615	2595	2550	2305
<b>E</b>	83.8	15.3	∞	9.00	36.5	90-110	10005	2595	2550	2465
<b>F</b>	82.8	17.4	∞	9.00	36.5	90-110	10370	2595	2550	2465
<b>G</b>	82.0	19.7	∞	9.00	36.5	90-110	10695	2595	2550	2465
<b>H</b>	81.3	22.0	∞	9.00	36.5	90-110	10960	2595	2550	2465

**B****C****D****E****F - V1, V2****F - PJ170C****F - PJ170E JV1****G****G - PJ125C****G - PJ125E JV1****G - PJ170C****G - PJ170E JV1****H - V1, V2**

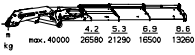
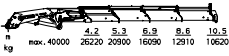
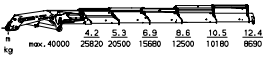
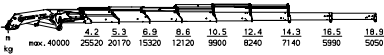
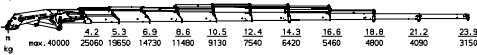
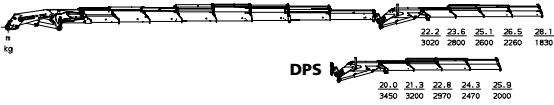
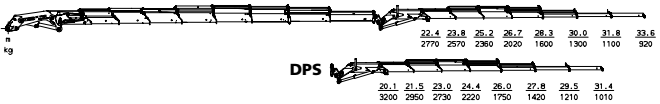
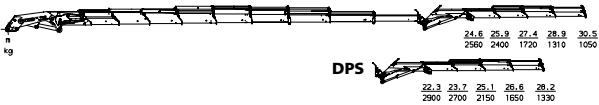
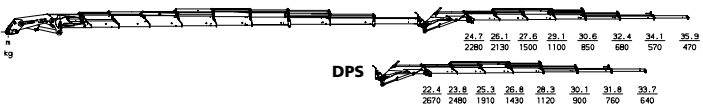
The outreaches stated are with a boom angle of 20° and are therefore not the maximum.

# PK 150002

## Performance



	(mt)	(m)	(°)	(mt)	(MPa)	(l/min)	(kg)	(mm)	(mm)	(mm)
<b>B</b>	112.9	8.9	∞	12.00	33.0	2*100	11330	2605	2550	2630
<b>C</b>	110.8	10.8	∞	12.00	33.0	2*100	11819	2605	2550	2630
<b>D</b>	108.8	12.7	∞	12.00	33.0	2*100	12285	2605	2550	2630
<b>E</b>	107.2	14.6	∞	12.00	33.0	2*100	12721	2605	2550	2695
<b>G</b>	105.4	19.1	∞	12.00	33.0	2*100	13517	2605	2550	2795
<b>H</b>	104.9	21.5	∞	12.00	33.0	2*100	13837	2605	2550	2795

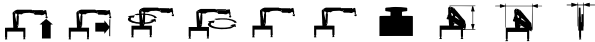
**B****C****D****E - V1, V2****G - V1, V2****G - PJ170C****G - PJ170E JV1****H - V1, V2****H - PJ125C****H - PJ125E JV1**

The outreaches stated are with a boom angle of 20° and are therefore not the maximum.




# PK 12001 L

Performance



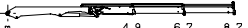
	(mt)	(m)	(°)	(mt)	(MPa)	(l/min)	(kg)	(mm)	(mm)	(mm)
<b>Std</b>	11.4	6.9	420	1.50	30.0	30-50	1597	2405	2480	-
<b>A</b>	10.9	8.9	420	1.50	30.0	30-50	1712	2405	2480	-

### Std



m		<u>4.9</u>	<u>6.7</u>
kg	max. 4800	2350	1690

### A

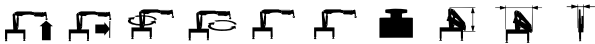


m		<u>4.9</u>	<u>6.7</u>	<u>8.7</u>
kg	max. 4700	2260	1600	1220

The outreaches stated are with a boom angle of 20° and are therefore not the maximum.

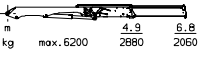
# PK 15001 L

Performance

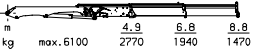


	(mt)	(m)	(°)	(mt)	(MPa)	(l/min)	(kg)	(mm)	(mm)	(mm)
<b>Std</b>	14.1	7.0	420	1.90	30.0	40-60	1803	2400	2480	-
<b>A</b>	13.6	9.0	420	1.90	30.0	40-60	1953	2400	2480	-
<b>B</b>	13.1	11.3	420	1.90	30.0	40-60	2088	2400	2480	-

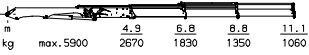
**Std**



**A**



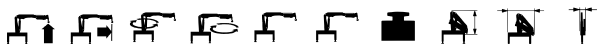
**B**



The outreaches stated are with a boom angle of 20° and are therefore not the maximum.

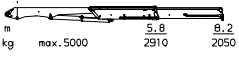
# PK 18001 L

Performance

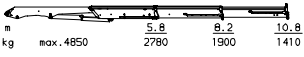


	(mt)	(m)	(°)	(mt)	(MPa)	(l/min)	(kg)	(mm)	(mm)	(mm)
<b>Std</b>	17.0	8.4	440	2.3	30.0	45-65	2202	2490	2500	-
<b>A</b>	16.3	11.0	440	2.3	30.0	45-65	2384	2490	2500	-
<b>B</b>	15.5	13.5	440	2.3	30.0	45-65	2554	2490	2500	-

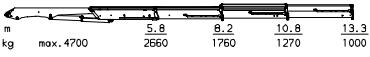
**Std**



**A**



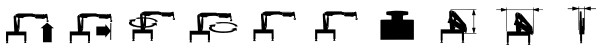
**B**



The outreaches stated are with a boom angle of 20° and are therefore not the maximum.

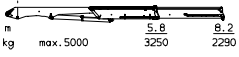
# PK 20001 L

*Performance*

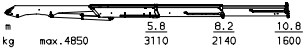


	(mt)	(m)	(°)	(mt)	(MPa)	(l/min)	(kg)	(mm)	(mm)	(mm)
<b>Std</b>	19.0	8.4	440	2.3	33.0	65-90	2172	2490	2500	-
<b>A</b>	18.2	11.0	440	2.3	33.0	65-90	2354	2490	2500	-
<b>B</b>	17.5	13.5	440	2.3	33.0	65-90	2524	2490	2500	-

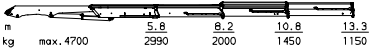
**Std**



**A**



**B**

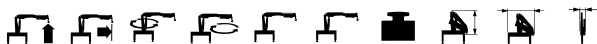


The outreaches stated are with a boom angle of 20° and are therefore not the maximum.



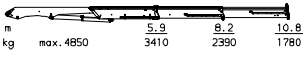
# PK 21001 L

Performance

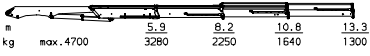


	(mt)	(m)	(°)	(mt)	(MPa)	(l/min)	(kg)	(mm)	(mm)	(mm)
<b>A</b>	20.2	11.0	440	2.7	30.0	50-75	2488	2490	2500	-
<b>B</b>	19.5	13.5	440	2.7	30.0	50-75	2658	2490	2500	-
<b>C</b>	18.5	16.1	440	2.7	30.0	50-75	2813	2490	2500	-

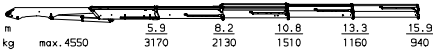
**A**



**B**



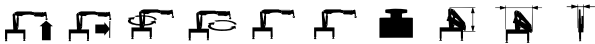
**C**



The outreaches stated are with a boom angle of 20° and are therefore not the maximum.

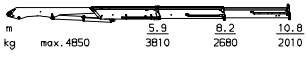
# PK 24001 L

Performance

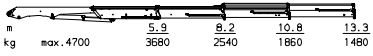


	(mt)	(m)	(°)	(mt)	(MPa)	(l/min)	(kg)	(mm)	(mm)	(mm)
<b>A</b>	22.6	11.0	440	2.7	33.0	75-100	2458	2490	2500	-
<b>B</b>	21.8	13.5	440	2.7	33.0	75-100	2628	2490	2500	-
<b>C</b>	21.2	16.1	440	2.7	33.0	75-100	2783	2490	2500	-

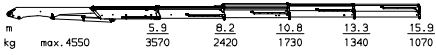
**A**



**B**



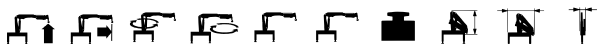
**C**



The outreaches stated are with a boom angle of 20° and are therefore not the maximum.

# PK 25001 EL

*Performance*

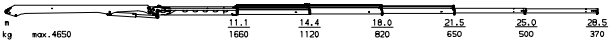


	(mt)	(m)	(°)	(mt)	(MPa)	(l/min)	(kg)	(mm)	(mm)	(mm)
<b>A</b>	21.3	18.3	∞	3.30	33.0	70-90	3298	2534	2500	-
<b>B</b>	19.3	21.9	∞	3.30	33.0	70-90	3541	2534	2500	-
<b>C</b>	17.8	25.5	∞	3.30	33.0	70-90	3728	2534	2500	-

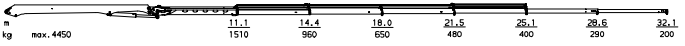
**A**



**B - V1, V2**



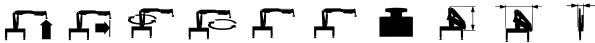
**C - V1, V2**



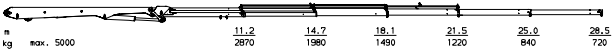
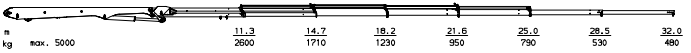
The outraches stated are with a boom angle of 20° and are therefore not the maximum.

# PK 40001 EL

*Performance*



	(mt)	(m)	(°)	(mt)	(MPa)	(l/min)	(kg)	(mm)	(mm)	(mm)
<b>A</b>	35.9	18.4	∞	7.00	33.0	80-100	3870	2300	1400	-
<b>B</b>	33.1	21.9	∞	7.00	33.0	80-100	4185	2300	1400	-
<b>C</b>	30.6	25.4	∞	7.00	33.0	80-100	4475	2300	1400	-

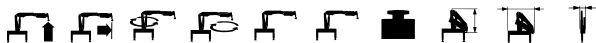
**A****A - PJ080B****A - PJ080C JV2****B - V1, V2****C - V1, V2**

The outreaches stated are with a boom angle of 20° and are therefore not the maximum.




# PK 12000 T


## Performance



	(mt)	(m)	(°)	(mt)	(MPa)	(l/min)	(kg)	(mm)	(mm)	(mm)
<b>B</b>	12.4	8.0	420	1.40	30.0	35-45	1461	2280	2500	765
<b>C</b>	11.8	10.0	420	1.40	30.0	35-45	1559	2280	2500	780

**B**

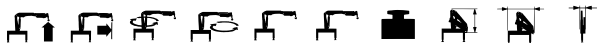
m	max.	5000	2.5	4.2	6.0	8.0
kg			4790	2740	1850	1400

**C**


m	max.	4800	2.5	4.2	6.0	8.0	10.0
kg			4590	2620	1760	1300	1040

# PK 14000 T


Performance



	(mt)	(m)	(°)	(mt)	(MPa)	(l/min)	(kg)	(mm)	(mm)	(mm)
<b>B</b>	13.2	8.0	420	1.40	33.0	40-70	1476	2280	2500	725
<b>C</b>	13.1	10.0	420	1.40	33.0	40-70	1574	2280	2500	740

**B**

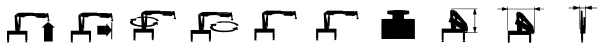
m	max.	5500	<u>2.5</u>	<u>4.2</u>	<u>6.0</u>	<u>8.0</u>
kg			5290	3040	2070	1560

**C**


m	max.	5300	<u>2.5</u>	<u>4.2</u>	<u>6.0</u>	<u>8.0</u>	<u>10.0</u>
kg			5070	2920	1970	1460	1160

# PK 16000 T


Performance



	(mt)	(m)	(°)	(mt)	(MPa)	(l/min)	(kg)	(mm)	(mm)	(mm)
<b>B</b>	15.6	8.0	420	1.80	30.0	40-50	1598	2280	2500	790
<b>C</b>	14.9	10.0	420	1.80	30.0	40-50	1708	2280	2500	800

**B**

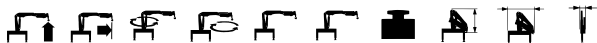
m	max.	6300	<u>2.5</u>	<u>4.2</u>	<u>6.0</u>	<u>8.0</u>
kg			6040	3480	2370	1790

**C**


m	max.	6100	<u>2.5</u>	<u>4.2</u>	<u>6.0</u>	<u>8.0</u>	<u>10.0</u>
kg			5790	3330	2250	1670	1330

# PK 18000 T

Performance




	(mt)	(m)	(°)	(mt)	(MPa)	(l/min)	(kg)	(mm)	(mm)	(mm)
<b>B</b>	17.2	8.0	420	1.80	33.0	50-70	1613	2280	2500	790
<b>C</b>	16.5	10.0	420	1.80	33.0	50-70	1723	2280	2500	800

**B**

A diagram of a crane boom with four jibs of different lengths extending from the left end. The jibs are marked with their respective lengths in meters.

m	max. 7000	<u>2.5</u>	<u>4.2</u>	<u>6.0</u>	<u>8.0</u>
kg		6660	3850	2630	1980

**C**

A diagram of a crane boom with five jibs of different lengths extending from the left end. The jibs are marked with their respective lengths in meters.

m	max. 6700	<u>2.5</u>	<u>4.2</u>	<u>6.0</u>	<u>8.0</u>	<u>10.0</u>
kg		6400	3700	2510	1870	1490





(mt)

- Hubmoment
- Lifting moment
- Momento máximo de elevación
- Momento di sollevamento

- Couple de levage
- Hefmoment
- Løftemoment



(m)

- Reichweite
- Outreach
- Alcance
- Sbraccio

- Portée
- Reikwijdte
- Rekkevidde



(°)

- Schwenkbereich
- Slewing angle
- Angulo de giro
- Angolo di rotazione

- Rotation
- Zwenkbereik
- Svingsektor



(mt)

- Schwenkmoment
- Slewing torque
- Momento de giro
- Coppia di rotazione

- Couple de rotation
- Zwenkmoment
- Svingmoment



(MPa)

- Druck
- Pressure
- Présion
- Pressione

- Pression
- Druk
- Trykk



(l/min)

- Fördermenge
- Pump capacity
- Caudal
- Portata

- Débit
- Pompobrengrst
- Pumpekapasitet



(kg)

- Krangewicht
- Crane weight
- Peso de la grúa
- Peso della gru

- Poids de la grue
- Kraangewicht
- Egenvekt



(mm)

- Kranhöhe
- Crane height
- Altura de la grúa
- Altezza della gru

- Hauteur de la grue
- Kraanhoogte
- Kranhøyde



(mm)

- Kranbreite
- Crane width
- Anchura de la grúa
- Larghezza della gru

- Largeur de la grue
- Kraanbreedte
- Kranbredde



(mm)

- Einbaubreite
- Installation width
- Anchura de montaje
- Larghezza di montaggio

- Largeur de montage
- Inbouwbreedte
- Spalteplass